



PUTTING PEOPLE FIRST

This time last year no-one could have predicted the devastating effect Covid-19 was to have on our Parish. The hardship has brought out the best in our residents with communities coming together to support each other through lockdowns.

Whilst our office premises may have been closed to the public, Councillors and Officers have continued to work throughout the lockdown period to ensure that the local services we provide and maintain could continue—where permitted, planned projects were delivered and most importantly of all local residents had access to food, children could access school clothing and factual information was available via our website and social media pages.

This newsletter gives you a snapshot of what we have been up to along with an update on support groups and exciting developments proposed throughout our parish.



IN THIS ISSUE

NO INCREASE
IN PARISH
PRECEPT

£35K PLEDGE TO
COMMUNITY
SUPPORT FUND

MAY 2021
ELECTIONS

SUPPORTING
FOODBANKS

NEW PLAY
AREAS &
EQUIPMENT

BRITISHVOLT
WHAT WE
KNOW SO
FAR

CONTACT
DETAILS FOR
KEY SERVICES
& SUPPORT

We didn't cancel Christmas!

Whilst the traditional activities such as our Christmas Lights Switch On, the Children's Christmas Party, Every Ticket Wins tombola, Pantomime and Live music events could not take place we made sure that there was still Christmas cheer!



Every primary school child in the parish received a selection box and a gift voucher valued at £10.



Chairman, Councillor John Batey, switched on the lights of our beautiful tree. During 2020 we purchased a further eight motifs to extend our Festive lighting display along Ravensworth Street and Clayton Street. Thank you for all your wonderful comments!



Thank you to our fabulous schools for arranging the safe delivery of our Christmas gifts to every pupil.



Parish Precept 2021/2022 Explained

Council Tax frozen at £138.00 and Budget Re-prioritised

On 27 January 2021, East Bedlington Parish Council agreed its annual Parish Precept at £277,038. The Parish Precept is the net amount that the Council needs to finance its budget after offsetting grants, allotment income and appropriations from reserves.



The Precept, when divided by the Council's Tax base, determines how much Council Tax each (Band D equivalent property) must pay. The amount that individual properties are liable for depends on the tax band applicable to their values. There are 8 Council Tax bands (A to H) whereby a Band A property is liable for 6/9th of the Band D amount and a Band H property is liable for 18/9ths.

East Bedlington has a high percentage of Band A and B properties which contributes to a low tax base in comparison to more affluent areas. However, the tax base is further reduced by the number of Band D properties equivalent to Council Tax benefits paid out. Although most Principal Authorities compensate Town & Parish Councils by way of Council Tax Support Grant, Northumberland County Council's policy is to withhold such payment. The impact of this policy is a 25% reduction in the Parish Council's Tax base equivalent to £75,000 per year, or an increase of £28.00 on the Council Tax.

Budget Strategy

In taking account of the current levels of Council Tax, which in part are forced upon the Council because of Northumberland County Council's policy, your council has decided to freeze its element of the Council Tax at £138.00 (for a Band D property) and to absorb the additional loss of revenue caused by increased numbers in receipt of benefits during the pandemic. In setting this year's budget a two-fold approach has been taken to,

1. Minimize non-essential spending to allow as much funding as possible to become available for Community Support to help address hardship experienced by residents. By taking this approach we have managed to set aside £35,000 to help with providing grants and meat vouchers to local foodbanks and contributing to the Fareshares schemes operated by Cambois and Bedlington Station Primary Schools. This will be in addition to existing financial support for our 3 primary schools and contributions to Bedlington High School Breakfast Club. We will also continue to award small grants and make donations to Not-for-Profit organisations.
2. Identify and ring-fence reserves to ensure that funds are available to sustain the Councils assets, finance the Council's strategic priorities such as town centre redevelopment and to provide for emergency events such as those currently being experienced.

Over the past 10 years your Council has invested heavily in the regeneration of Bedlington Station Town Centre through investment in East Bedlington Community Centre, Station Walk and improvements to Khan's car Park. In keeping with its commitment to the redevelopment of Bedlington Station the Council has set aside £40,000 to support a Heritage Lottery bid to redevelop the Station buildings. There are still bridges to be crossed but if we are fortunate enough to be allocated the buildings by Network Rail and subject to a successful lottery bid, our parishioners can look forward to a first-class rail experience when passenger services resume.

The Council has also invested in play equipment, outdoor gyms, and street furniture. To ensure that these assets can be replaced the Council has established a £115,000 renewal fund and made a commitment to make annual contributions to maintain it. Notwithstanding this commitment the Council decided not to make contributions in the current year to allow additional funds to be released to help with Community Support.

Ron Thornton

Investment in Leisure and Play

Jennings Field

In February 2020 we completed installation of new equipment in Jennings Field.

We listened to your concerns around anti-social behaviour and ensured that there was provision for our younger parishioners. The KOMPAN-designed area has been really popular and well used once the Covid-19 restrictions were lifted.

We have also added some outdoor gym equipment to support everyone exercising outdoors and increased the seating and bin provision which we know will be welcomed by the numerous dog owners who regularly use the park.

We will continue to enhance this area and hope to plant some trees, shrubs and flowers to really give the field a lift. We have already sown two swathes of wild flowers either side of the field so keep an eye out for some native blooms popping their heads out over the next few months.



If you do notice anything untoward, please work with us and report any anti-social behaviour as it is happening on 101. You can do this anonymously and it will help create a fabulous safe area for the whole family to enjoy.

Investment in Leisure and Play Update

Kings & Queens Road

Following a meeting with residents on this estate we have worked with Bernicia to look at ways in which we could extend the existing play facilities to engage the growing number of families on the estate. The green space on the estate attracts not only families from the estate but surrounding streets as it is on the walking route to both Bedlington Station Primary School and Bedlington Academy.

We looked at several design options with KOMPAN and settled on a scheme which offered best value for money and most importantly the greatest number of options for inclusive play.

In total £35,000 has been invested in the scheme which includes a generous donation of £10,000 from County Councillor Jeff Gobin's members Local Improvement Schemes



Installation was completed in time for the lifting of Covid-19 restrictions on outdoor play. We are delighted to hear that since installing the equipment youth related anti-social behaviour on the periphery of the estate has decreased month on month.



FACTCO | *Bringing Fibre Communications to Life*

Cambois and Sleekburn Community Fibre Project Update

FACTCO are the team behind the new Cambois and Sleekburn Full Fibre network which is being built under the Gigabit Broadband Scheme. They are working alongside the i-Northumberland team on the project.

FACTCO tell us the actual value to Cambois and investment through the Department for Digital, Culture, Media & Sport (DCMS) is a staggering £500,000 which is the largest in the country. As a huge benefit, all of the 484 properties both residential and business can connect into the new network. This will allow speeds of up to 1000 Mbps. Only 4% of Northumberland can access full-fibre broadband and only 14% of the UK.

This is a huge chance for Cambois and Sleekburn to take a lead in our county and this will also help in many other areas such as:

- Home Schooling
- Home Working
- Access to local NHS services such as GP surgeries
- Increased Property Values
- Access to online shopping

These are just a few of the added benefits and values of an ultra-fast broadband connection.

FACTCO aim to connect as many people as possible in 2021 to the network. However, the scheme is due to end in March so we must ensure everyone has accepted their voucher as part of the community's broadband pledge. The reason for this is that even though the network will be built for free a connection charge thereafter would apply. Currently, the DCMS will cover the £1500 per residential property and £3500 for a business.

For more details on the scheme or to sign up contact

Ian Finlay | Business Development Manager

Mobile 07480 402 165

Landline 0333 305 7560

Email ian@factco.co.uk



BLYTH OFFSHORE WIND FARM PHASE TWO EXPANSION UNDERWAY USING FLOATING TURBINES



EDF Renewables plans to build phase two of the Blyth Offshore Demonstrator (BOD) wind farm off the coast of Northumberland using floating offshore wind technology. Once completed it would be among the first projects of this kind in English waters.

The first phase of the wind farm consists of 5 wind turbines and was constructed in 2017. It has a generating capacity of 41.5MW and was the first UK offshore wind farm to utilise float and submerge gravity base foundations, as well as 66KV rated inter array and export cables to connect the turbines to an onshore substation.

EDF Renewables is already working on project planning for phase two, with a consent variation and procurement activities underway to use the Blyth site for the installation of up to 5 further turbines. This would be in an already identified array location 14km from the shore in water depths of around 55 metres.

The turbines to be installed in the BOD Phase two project will be constructed on floating sub structures. The project has yet to select the key contractors including the turbine supplier but a range of floating technology options are being considered, with the final design still to be determined by further detailed engineering studies.

A key requirement of the project is to demonstrate new and innovative technologies that have potential to reduce the cost of offshore wind (floating and fixed) developments in the future. As a result, EDF Renewables is working closely with suppliers and research organisations including the Offshore Renewable Energy Catapult to ensure these technologies and approaches are fully explored and incorporated where appropriate.

Director of Offshore wind at EDF Renewables, Michele Schiavone said: “We are very excited about this next phase of the BOD project and want to further the demonstration of construction and operation of floating turbines to show that floating wind is technically feasible and cost competitive in water depths of 50-60 metres.

With the Contract for Difference (CfD) mechanism providing a potential route to market, we are confident that floating turbine technology can accelerate the UK’s journey to a net zero future where clean energy powers all our lives. We will use the project to support the further development of this emerging technology.

The development timescale for BOD phase two has not yet been finalised. However, subject to detailed programming, the target is for it to be fully commissioned by Spring 2025.”



Britishvolt

Creating the greatest stir in our community at the moment is undoubtedly the announcement from Britishvolt, that they are seeking planning permission to build the first battery gigaplant in the UK, on the site of the former power station coal yard on Brock Lane, Bedlington.

Should the plant go ahead, it will be one of the UK's largest industrial investments ever. Britishvolt plans to invest £2.6bn and they are hoping to create 3,000 jobs.

The jobs will be focussed on producing world-class lithium-ion batteries, for the purpose of powering future electric vehicles.

The East Sleekburn site is considered the best place in Britain to build these batteries. In addition to the committed and hardworking workforce, the site has superb transport links with road, rail and the Port of Blyth nearby. There is also first class access to renewable energy, which will help the organisation meet its goal of zero carbon manufacturing. Director Peter Rolton said "The chance to regenerate a former coal yard, into a world-leading, ultra-clean facility, requiring a highly-skilled workforce reinforces our reasoning for wanting to come here".

Britishvolt has distributed some 11,000 leaflets throughout the neighbouring community, outlining what they hope to achieve and welcoming residents' comments, observations and questions prior to the submission of a formal planning application.

In addition to the direct jobs created in the manufacturing of the lithium-ion batteries, it is hoped that a further 5,000 jobs could be created in supply chain industries, which is good news for job starved south-east Northumberland.

Should planning be granted and the necessary funding put in place for the project to go ahead, it is hoped that construction can begin in summer 2021.


Britishvolt welcomes comments on the proposals via email at planningapplication@britishvolt.com. It is expected that a planning application will be submitted soon.

Check out the following pages to get an idea of the scale of this project. When completed it will be the fifth largest building in the UK and the sixteenth largest in the world.

Parish News

BRITISHVOLT
Power On

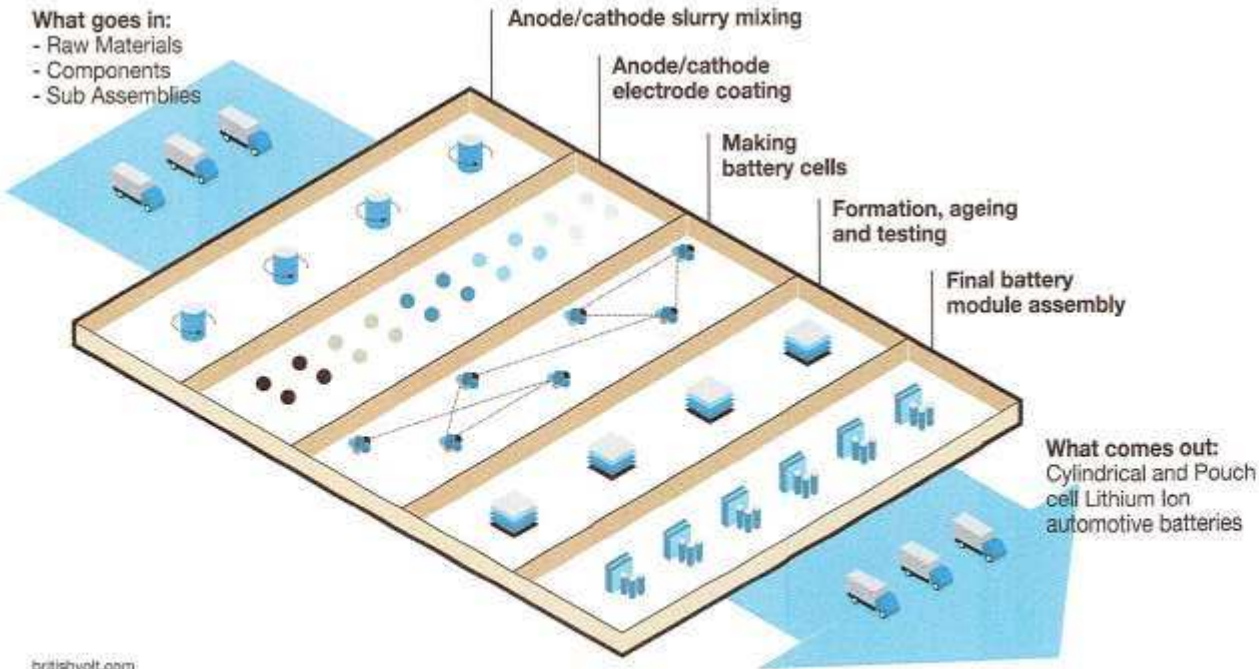
- Approximately 3000 jobs for local people
- £2.6bn investment
- Enough batteries for 300,000 cars per year
- Focus on clean renewable energy
- Zero waste to landfill
- Ultra-clean, green manufacturing process
- The site is of perfect size and location
- Superb transport links by road, rail and sea
- World-class local workforce
- Facility will be 250,000 square metres
- First batteries produced end of 2023
- Fully operational by end of 2027
- Prioritising health and wellbeing of colleagues
- Supporting local businesses
- Regenerating and providing value
- World-class skills; powering the future
- Developing links with schools & universities
- Inspiring young people for future success

 Printed on 100% recycled paper

britishvolt.com

What does a battery gigaplant do?

BRITISHVOLT
POWER ON



Cambois surgery – notice of potential relocation

If you are a patient who attends either **Cambois Surgery** or **The Gables Medical Group**, please read the below information.

Gables Medical Group are considering the permanent closure of the Cambois surgery branch site.

We understand that you may have some questions about this potential change or have views that you would like to be considered.

If you would like to provide feedback, you can do so in a number of ways:

1. There will be two online meetings (via Microsoft Teams) on Tuesday 16 February at 1pm or Saturday 27 February at 11am. Please email us at Gables.a84013@nhs.net if you wish to attend and we will forward an invitation. Please use the comments boxes located in both surgeries.
2. You can contact Cambois surgery at:

The Gables Medical Group
26 St Johns Road
Bedlington
Northumberland
NE22 7DU
3. Telephone the practice manager on 01670 829889.

Please make the most of this opportunity – we look forward to welcoming your views.

business case in the autumn for release of the final tranche of funding.

The applications will be considered by the council's strategic planning committee later this year. Northumberland County Council had advised that they intend to keep residents up to date with the issue of a newsletter.

The Parish Council will share any information we are able to via our website, www.eastbedlingtonpc.org.uk Facebook page and in our public displays at East Bedlington Community Centre.

A little history

Before the railway came, Bedlington Station was still 'Sleekburn', but the 'iron waggonway' laid by Jackie Birkinshaw from the Bedlington Iron Works changed all that. Suddenly, this was the centre of a technological revolution and Bedlington Station was born. Many are the stories that revolve around "waitin' for the train" and two of them are printed here.

The names of the rooms in our Community Centre pay homage to this railway heritage : 'The Ticket Office', 'Buffet Car', 'Platform One', 'The Sidings', and 'Bayard' (after the first locomotive ever to pull a train in Italy), which was built 'down Furnace Bank'.

The street names at North Blyth bear testimony to this shared past : Thomas William **Worsdell** was the Chief Locomotive Engineer of the North Eastern Railway Company; Sir David **Dale** a director of that company, and Thomas **Gray**, a contemporary of Michael Longridge and of George and Robert Stephenson, who was an early supporter of steam locomotives and passenger trains.

In many ways, **Thomas Gray**, although the least honoured in his day, is the most interesting of these three : he advocated an integrated transport system and state control over the development and ownership of the railways. Perhaps Northumberland will one day see his vision realised.

When the four sons of Michael Longridge, manager of the Iron Works, wanted to honour their favourite teacher at the University of Edinburgh, they presented him with "Edina", this beautiful working model of the type of locomotive Bedlington Iron Works became justly famous for.

We shall see whether the proposed plan for the 'new' Bedlington station at Bedlington Station revitalises our Parish in the way the railways did more than 150 years ago.



Parish Activities

Holiday Scheme Activities with Bad Apples North East

We know how much our younger residents are enjoying our Free out of school activities.

At the time of writing Covid restrictions are very much still in place but we hope that we will be permitted to provide a range of activities this year. If you would like to register your child with us via email by messaging our Facebook page we can keep you informed as soon as we are able to put a scheme together.

Activities are suitable for ages 5 to 12 years.

All sessions are FREE to residents living in East Bedlington Parish. The maximum number per activity is 30.



EAST BEDLINGTON PARISH COUNCIL SMALL GRANTS SCHEME

The Parish Council operates a small grants scheme to support voluntary & community sector groups who are either based within the boundaries of the Parish, or who are based outside but still deliver a significant service to the residents of East Bedlington, on a not for profit basis.

Application forms are available from the Parish Office or they can be downloaded from the Parish Council website www.eastbedlingtonpc.org.uk

Community Groups must have a constitution and bank account in their Group name. We do not fund individuals; activities which are normally statutory provision; businesses; salaries or wages; and cannot fund retrospectively. Typical awards are between £50 and £250 and each application is considered on its merit. For more information please contact the Clerks on 01670 828808 or email clerk@eastbedlingtonpc.org.uk



Bedlington Academy applied to the small grant scheme to help provide Christmas Hampers for senior citizens in the Parish.

ANNUAL AWARDS

Let it grow! Garden Competition 2021

Entries are now open for our annual Garden Competition. You will find an entry form at the Parish Office, or online at www.eastbedlingtonpc.org.uk

The competition is aimed at celebrating the efforts made by those living in East Bedlington Parish and the contribution they make to enhancing the environment. There are five categories to enter:

- Best Allotment
- Best Small Garden
- Best Large Garden
- Best Back Yard
- Best Individual Container/ Planter / Hanging Basket

Judges may award discretionary prizes in addition to the standard categories. All entrants must live in East Bedlington Parish and the garden / allotment entered must also be located within the Parish boundaries.

Judging will take place week commencing 5 July and all entrants will be invited to attend an Award Presentation Evening on Saturday 11 September 2021. Please make sure your completed entry forms are handed into the Parish Council Office, 16 Station Street, Bedlington NE22 7JN no later than midday Monday 28 June 2021. Should Covid-19 restrictions remain in place entries may be returned electronically to Clerk@eastbedlingtonpc.org.uk

Colin Parker Good Neighbour Award

Do you know someone who goes the extra mile to help out without seeking any financial reward? Someone who takes the time to make sure others are alright or helps out with little errands that mean so much? Nominate them for this award.

Brian Richmond Sporting Achievement Award

Do you know someone who has excelled at sport? Someone who has worked hard to promote their chosen sport or volunteers their time to help others participate in sport? Nominate them for this award.

Volunteer of the Year & Volunteer Group of the Year

Do you know an individual or group who willingly undertakes voluntary work to enrich the lives of others? Someone who wants to make a difference by volunteering in our community? The individual nominee must live in the Parish. The group nominee must carry out activities in the Parish.

Apprentice of the Year

Do you have an apprentice who stands out from the crowd? Someone who contributes to your workforce, bringing enthusiasm and passion to their work? Nominate them for this award.

All Community Award nominees must live within the East Bedlington Parish Council boundaries. They may participate in their activities outside the parish. Nominations should be received at the Parish Office no later than midday Friday 30 July. All nominees will be invited to our **Awards Evening Saturday 11 September 2021** Presentations - entertainment and buffet

Parish investment

New bus shelter



Residents living in and around the Bank Top pub contacted members to consider the replacement of a bus shelter on Glassey Terrace. The previous shelter had been removed when its condition had deteriorated beyond economical repair and was subjected to constant vandalism. A new shelter was installed in Spring 2020 and has been warmly received by the community.

“everyone will be so happy to have our shelter back” *Sheila Finlayson, Resident*

Outdoor Gym upgrade Cambois Links

Restrictions imposed by Covid-19 regulations encouraged many people living and visiting our parish to exercise outdoors. Acting on the recommendations of our Outdoor Services Officer, members agreed to the replacement of five pieces of outdoor gym equipment on Cambois Links and refurbishment of some of the installations in the Free Wood. The outdoor gyms have proved to be exceptionally well used and have helped support physical and mental well being in our community throughout this challenging year.



Making a difference

It is always good to recognise those in our community who are full of civic pride and want to make a difference. Our thanks go out to Jennifer and her family who regularly litter pick on the Bower Grange estate. East Bedlington Parish Council provide the litter pickers and NCC provide plastic bags. If anyone else would like to get involved in helping to keep their neighbourhood clean and tidy just get in touch with our Deputy Clerk, Jenny Tindale on 01670 828808 who can source equipment for you.

Parish investment



Public seating

We have repaired and upgraded the Heritage Seating at Cambois, replaced the seating on the A1147/ Moorland junction with a new anti-vandal proof bench and replaced the damaged seating in the Free Wood with a repurposed Heritage anti vandal model—perfect for taking a break in the warm sun. Thanks to contract works from Morpeth Welding and WL Straughan & Son Ltd.



Cambois MUGA

A specialist sports mesh has been added to the goal mouth areas replacing the heavily corroded fencing, to ensure that the equipment can be enjoyed for years to come. Originally installed following fund raising efforts by Cambois Community Champion Les Paton, the facility is well used by our young residents.

Support & Advice

Northumberland Communities Together

Northumberland Communities Together has been launched in response to the Coronavirus pandemic. It will make sure our residents are kept safe and well throughout this crisis, and provide coordination to support individual volunteers, voluntary groups and communities across our county.

If you or anyone in your family needs a bit of extra support please get in touch.

- Perhaps your financial circumstances have changed with reduced hours, redundancy or you're on benefit;
- Worried about winter bills or financial pressures, we are working with Citizens Advice Northumberland to connect and support families;
- Feeling lonely, overwhelmed or struggling with mental health;
- If you do need food or medicine, please order it online or by phone or ask friends and family to drop it off at your home;
- If you don't have family or friends nearby please contact: Northumberland Communities Together on 01670 620015 and we can support you;
- Children and young people eligible for free school meals will continue to receive support whilst learning at home. If you as a parent or carer are unsure what is in place for your child(ren) please contact their school directly. If you are not in receipt of free school meals already but think your child(ren) may be eligible;
- Worried about someone experiencing domestic abuse or concerned about a neighbour;

Phone the Northumberland Communities Together Response Hub on **01670 620015** 9am-6pm, 7 days a week or email: NCT@northumberland.gov.uk

Struggling with school uniforms or children's clothing?

Choppington Uniform Shop has been set up as part of **Choppington Together**.

Based in Choppington School, Scotland Gate, the lovely team at **Choppington Together** have set up this venture to provide some much needed relief in these uncertain times and beyond.

They will provide items such as jumpers, t-shirts, pants, etc for a small fee which is affordable to everyone no matter the financial circumstances. The service is open to anyone living in the former Wansbeck District. Follow them on Facebook <https://m.facebook.com/ChoppingtonUniformShop/> for more information and opening times.

School uniform support is also available from Wansbeck for Affordable School Uniform https://m.facebook.com/profile.php?id=649303972337383&ref=content_filter a Facebook page set up to facilitate call outs, and exchanges and to campaign for change in school policy.

The Parish Council will facilitate uniform and clothes exchanges at East Bedlington Community Centre once restrictions permit and we have sufficient levels of stock—keep checking our website www.eastbedlingtonpc.org.uk for updates.

Parish Foodbanks

In East Bedlington we don't want to see anyone going without food. Throughout 2020 we have supported foodbanks in all our Primary Schools and at Bedlington Academy, the Matthew Project and Wansbeck Valley Foodbank.

We applaud the efforts made in the Cambois Community driven by head teacher Marianne Allen who made use of the school minibus to deliver much needed supplies to those isolated and in need across the Cambois peninsula.

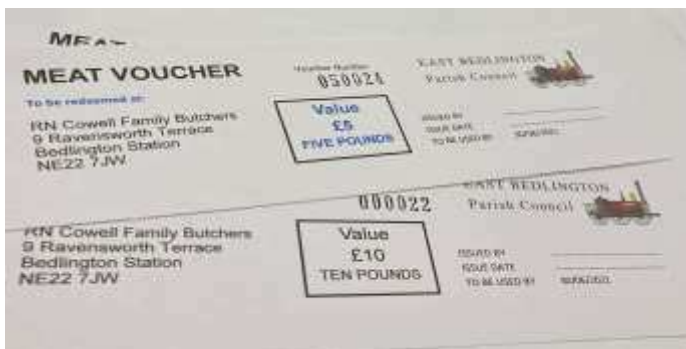
Northumberland Communities Together has been set up to bring the voluntary efforts under one umbrella and to ensure that no-one who is in need falls through the net. Information on how to contact NCT can be found on the previous page.

To supplement the supermarket surplus donated to East Bedlington Community Centre on a weekly basis from Aldi Ashington, the Parish Council has paid for FareShare deliveries of fresh food to stock up supplies.

In addition to our continued support to the Foodbanks, Schools and Breakfast Clubs the Parish Council has also introduced a meat voucher scheme. The vouchers will be issued to the Matthew Project foodbank referrals and can be redeemed at RN Cowell Family Butchers on Station Street, Bedlington Station.

Whilst we can't wait for a day when Foodbanks are no longer necessary, until that time comes we are pledging our support to the residents of East Bedlington to ensure no-one is without food.

During the current lockdown restrictions donations for the Matthew Project of tinned and non perishable items can be made at the Parish Council's office, within East Bedlington Community Centre, on Wednesdays between 10am and 12 noon.



Since East Bedlington Parish Council joined FareShare North East in 2020 we have redistributed

8.82 TONNES

of surplus food to our local community

This is equivalent to 21,000 meals!

 **FareShare**
North East


EAST BEDDLINGTON
Parish Council

Bedlington Station Remembered

From the Newcastle Journal

Wednesday, 24th June, 1914

OBSTRUCTION ON THE RAILWAY - ALLEGED ATTEMPT TO WRECK A LOCAL TRAIN

William Shield (18), and George Pharoah (18), miners, of West Sleekburn, were charged at Bedlington Magistrates Court, yesterday, with having attempted to wreck a train on the Newbiggin branch of the North-Eastern Railway on Saturday, April 25. The defendants were charged with having placed a gate upon a level crossing between Red Row and Institute Row. The gate, which guarded the line, had been taken off its hinges, carried twenty-two yards, and then placed upon the line. The gate was broken into pieces by a train which ran into it.

The offence was one of the most serious in the criminal code, as it amounted to an attempt to endanger the lives and safety of passengers travelling in the train.

The train left Bedlington Station a few minutes after 12 o'clock, midnight. When the driver reached the level-crossing, he could not see anything, but felt the engine jump, as if it had struck something. Splinters of wood flew up the right side of the engine. He travelled on to North Seaton, where he examined the engine. He found the right side plough bent inwards. The plough was a piece of inch steel.



On the night in question, the accused men went to a picture hall at Bedlington, where they stayed until 10.30. They stayed in the fish and chip shop until 11 p.m. then walked down to Bedlington Station to meet some girls off the Blyth train.

Witness Davison said they met three girls who had come on the train from Blyth, and they walked home with them to West Sleekburn. Pharoah went

over the crossing first with one of the girls, and Shield and witness Davison and the two other girls went over together.

Straight-talking Chairman of the Bench

The witness was said to have alleged that he left the defendants at the gate. He interrupted the court, saying : "That is wrong; I never said that. The policeman wrote things down I never said." The Clerk replied : "Which statement is correct, the one you have made to-day, or the one you made to the police ?"— Davison replied : "Neither of them."

The Chairman said : "The best thing you can do is to stand down and learn to speak the truth. In Courts you would have been dealt with very severely."

The Chairman added that no Bench could convict on such evidence. He asked if the sergeant had ever

Bedlington Station Remembered

read a statement over to a lunatic, for he might have done with as much reason after the manner in which Davison had given his evidence that day in court.

The N.E.R. Company had their sympathy in trying to put down those offences in that neighbourhood. They hoped that the effect of the publication of the proceedings would act as a deterrent upon those who were guilty of such offences.

Defendants were discharged.

Postscript :-

On **November 10th, 1914** George Pharoah enlisted in the Northumberland Fusiliers. He was wounded, but served throughout WW1.

His daughter still lives in Bedlington Station.

Barrington Colliery

August 1950

This was one of the happiest summers of my life. My Mam had given birth in June to my baby sister and I was to spend the summer holidays with my Gran and Grandad at The Colliery. We had moved to a 'New House' in Roslyn Park, Bedlington Station, it was brand new with all mod. cons. But to me, Barrington was still my home.

There was me, Ann, Gillian and Lilian; we were 5 years old and we did everything together. The sun shone every day and the highlight of our day being when Ann's brother-in-law Sid (Ann had two grown-up sisters) brought his 'Tanky' engine full of coal past the end of our street. We would hear his hooter sound as he came into Choppington Station and make a run for the end of the street, to sit on the railway wall and wave him past.

Sid would spray us with water from his tank as we watched him go past, it became a ritual that summer - as were his mother-in-law's pies. Auntie Ivy would bake twice a week, and on Tuesdays and Fridays we would be sitting on the wall with a plate pie in hand, and Sid would pull up and grab the pie for him and his co-driver for their dinner. I don't know why I remember this time, this summer, it just appears golden in my memory.

There was a foot-bridge at Bedlington Station to allow people to cross the railway line when the gates were closed to traffic. Often, rather than be late home from school, we would carry our bicycles over the bridge. But the most excitement was when a train came along and the engine driver let off steam (deliberately?!), enveloping us all in a damp, smelly cloud. We all thought this was great fun and went home reeking of a funny, oily smell. All of our clothes, coats and everything, had to be hung out on the washing line to air.

Simple fun of years gone by.

Muriel Douglass (née Scott)



Parish Elections 2021

Town , Parish and County Council elections in Northumberland are scheduled to take place on Thursday 6 May 2021 People living in East Bedlington Parish and registered to vote will have the opportunity to vote for candidates to form a new Parish Council.

What are Town & Parish Councils?

Parish and Town Councils are the part of government that is closest to the people. They serve the smallest areas and are responsible for local matters. These councils are funded through the “precept” - raising a sum collected with the Council tax each year to maintain and improve facilities and services for local people.

Parish and Town Councils have a number of basic responsibilities in making the lives of local communities more comfortable, many of which are often taken for granted. Essentially these powers fall within three main categories, representing the whole of the electorate within the Parish, delivering services to meet local needs; striving to improve the quality of life in the Parish.

Who are Councillors?

Councillors are elected representatives of an area of the Parish known as a ward and in some smaller parishes this may be entire Parish or Town Council area. East Bedlington is made up of two wards, Sleekburn and Bedlington East. Councils are elected by the public every four years.

What do Councillors do?

Decision making—through attendance, debate and voting at formal committees and working groups with other elected members. Councillors decide which activities to support, where money should be spent, what services should be delivered and what policies should be implemented.

Monitoring—through review and evaluation of Council decisions to ensure economy, efficiency and effectiveness and the achievement of desired outcomes.

Community leadership and engagement—As local representatives, Councillors have responsibilities towards their constituents and local organisations. These responsibilities and duties often depend on what the councillors are seeking to achieve and how much time they have available. They may include;

- Going to meetings of local organisations such as residents groups, Friends-of groups, becoming a school governor.
- Going to meetings of bodies affecting the wider community
- Taking up issues on behalf of members of the public.
- Running a surgery for residents to bring up issues.
- Meeting with individual residents in their own homes.

Developing and reviewing Council policies — ensuring policies are current and relevant.

How much time does it take up?

Councillors often find that their duties occupy them for between two and three hours a week. Obviously there are some councillors who spend more time than this—and some less, but in the main, being a parish or town councillor is an enjoyable way of contributing to your community and helping to make it a better place to live and work. In East Bedlington Parish Council meetings are held on the first Tuesday of each month and can last up to two hours.

Am I qualified?

Whilst you don't need any special skills or qualifications to be a Councillor, having or being able to develop the following skills, knowledge and attributes will help you.

Parish Elections 2021

- **Communication skills** -these include listening and interpersonal skills, public speaking skills, the ability to consider alternative points of view and negotiate, mediate and resolve conflict.
- **Problem solving and analytical skills**—this includes being able to get to the bottom of an issue and to think of different ways to resolve it, including considering the advantages and disadvantages of each option.
- **Team working**—being able to work with others in meetings and on committees and being able to complete any tasks you agree to do on time.
- **Organisational skills**—being able to manage your time, keep appointments and meet deadlines.
- **Ability to engage with your local community.** You may have to make yourself available through meetings, the media, internet, public forums, debates and on the telephone.

You may have gained skills through your professional, personal or community experience.

These could include:

- Knowledge of the needs of specific groups such as children and young people, older people or people with health problems.
- An understanding of financial management and reporting processes.
- Legal and regulatory systems and procedures.
- Housing, regeneration and environmental issues.

Don't worry if you don't have the confidence or skills to be a councillor. All Councils provide support, information and training for new councillors.

Who can be a councillor?

Almost anyone as long as you are:

- British or a citizen of the Commonwealth or European Union.
- At least 18 years old
- Registered to vote in the area or have lived, worked or owned property there for at least 12 months before an election.

You can't be a councillor if you:

- Work for the Council you want to be a councillor for, or for another local authority in a politically restricted post.
- Are the subject of a bankruptcy restrictions order or interim order.
- Have been sentenced to prison for three months or more (including suspended sentences) during the five years before election day.
- Have been convicted of a corrupt or illegal practice by an election court.

If you are in any doubt as to your eligibility you should contact the returning officer in the Electoral Services department of Northumberland County Council.

Further information on how you can apply, where you can collect your candidate packs and when they will need to be returned by will be issued by Northumberland County Council. We will share this information as soon as it is to hand. In the meantime ,

The best way to get to know how a Parish council works is to attend a meeting. During the current restrictions our meetings are being held via ZOOM details of meeting dates and links can be found on our website www.eastbedlingtonpc.org.uk

Community Support



Want to find out more about Neighbourhood Watch? The scheme has moved on a long way in recent years. To find out if there is an existing scheme in your neighbourhood or how you can start a new scheme, contact the Chair of Bedlington Neighbourhood Watch Scheme, Stephen Armstrong on 01670 825029 or email the group at steve.5265@btinternet.com

NCC Animal Welfare Out-of-hours Service

If you are in possession of a stray dog outside office hours and can't return the dog to its owner, we will arrange for the dog to be collected using our out-of-hours service. Call us on **0345 6006400**, as online forms are only picked up during normal working hours. Times for our out-of-hours service are listed below.

5pm to 10pm, Monday to Thursday | 4.30pm to 10pm, Friday | 8am to 10pm, Saturday/Sunday
8am to 8pm, bank holidays

NCC COUNTY COUNCILLOR SURGERIES

County Councillors can be contacted on the following numbers:

County Councillor Jeff Gobin—Sleekburn Ward 01670 822539

County Councillor Bill Crosby— Bedlington East Ward 07779 983656

REPORTING FAULTS & PROBLEMS

The following items are all the responsibility of Northumberland County Council who have a lo-call number to help reduce the cost of reporting. For all these matters please ring **0345 600 6400**. If you request the report reference number, you can check on the progress of your complaint if you feel that nothing is happening. You can also report the problems online at www.northumberland.gov.uk simply use the 'Report it' button and complete the relevant fields.

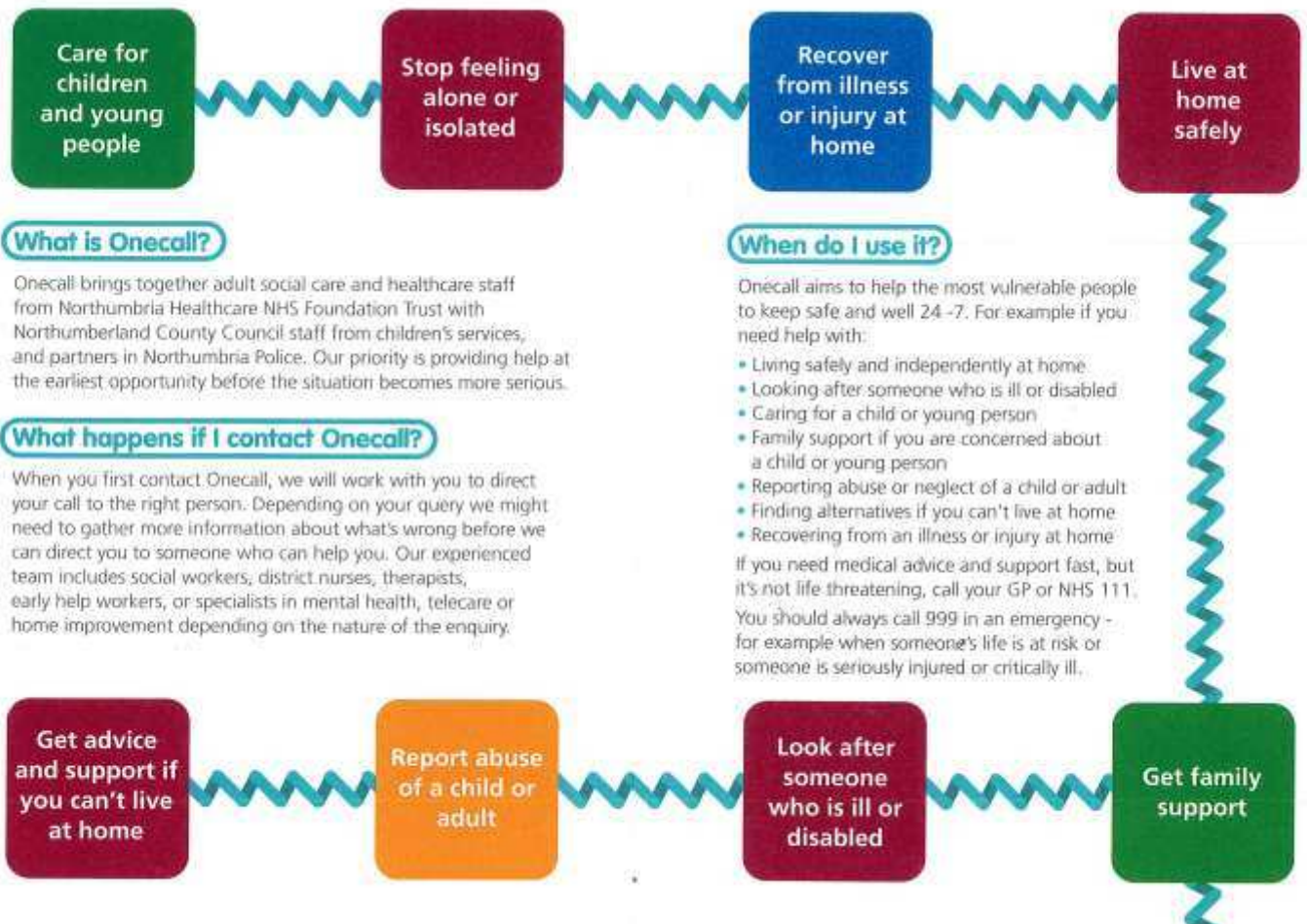
- Street lighting (please take note of the column number of the lamp post as you will be asked for this)
- Highways—including road markings; gritting; pot holes; missing or damaged signage
- Blocked drains
- Dog fouling and stray dogs
- Street cleansing
- Fly-tipping
- Tree maintenance
- Anti-social behaviour
- Abandoned Motor Vehicles
- Nuisance parking
- Minor localised flooding/blocked drains
- Bin collections
- Graffiti removal
- Unauthorised waste carriers
- Noisy animals
- Illegal grazing

If your concerns have not been addressed within the specified timescale, you can speak to your ward councillor who will be able to make enquiries on your behalf. Contact numbers are listed above.

Community Support

Onecall

No-one likes to be passed around from pillow to post especially when you have exhausted your energies trying to find the best service for your needs. One call is here for clear advice and support.



Valuing our green spaces and special places

We are blessed in East Bedlington with one of the most beautiful beaches and acres of green space. From the Links to the Free Wood, Jennings Field and Gallagher Park. Please help to keep these areas beautiful and safe for everyone to enjoy, especially now when enjoying our great outdoors has been threatened by Coronavirus restrictions.

If you witness anti-social behaviour, fly tipping, damage or dog fouling, report it—use the numbers listed opposite or if an offence is taking place dial 101. By working together we can ensure we hold on to our areas of natural beauty so they can be enjoyed for years to come.

Sign up to volunteer! There are lots of groups of like minded people who care about their community Friends of Gallagher Park, Friends of Furness Bank, Our Sea Trash Free, are great examples of this or you could sign up to the Green Dog Walkers Scheme. Speak to our friendly Parish Council Team to find out more...

Worship in the Parish

St Andrew's Church
Unity Terrace, Cambois

St John's Church
North View, Bedlington Station

Contact:
Rev'd Ian Hennebry 01670 823453
Enquiries can also be made to
reverendianh@gmail.com



Bedlington Colliery Methodist Church

Minister: Rev. Una McLean Tel: 01670 739008

Senior Steward— Mr. Sam Simmons Tel: 07791 249 409

Assistant Secretary— Mr. Henry Yorke Tel: 01670 824002

Visit us online at bedlingtoncollierymethodist.co.uk

Contact us by e-mail collierymeth@btinternet.com or on

<https://www.facebook.com/Bedlington-Colliery-Methodist-Church>



Can you help the Matthew Project Foodbank?

As more and more families are suffering from hardship, demand is growing on the foodbanks.

Donations of non-perishable food such as long life milk, breakfast cereals, flour, tinned foods, pasta, rice, biscuits, tinned vegetables, sauces, tinned fruit, tuna, hot dogs, tea, coffee, sugar, jam and instant mash are gratefully received.

The Matthew Project will also welcome toiletries, sanitary products, nappies, toilet rolls and cleaning materials.

During the Covid-19 restrictions donations can be left at East Bedlington Parish Council Office on Wednesdays between 10am and 12 noon. Alternatively, you can make arrangements for collections/deliveries by contacting Mike Clark on 01670 829062 or email mclark095@gmail.com

Your Councillors

SLEEKBURN WARD

Councillor Allan Stewart (Vice Chairman)	☎ 01670 826025
Councillor Alex Wallace	☎ 01670 822858
Councillor Lynda Mason	☎ 07805 538 454
Councillor Steve Aynsley	☎ 01670 898119

BEDLINGTON EAST WARD

Councillor John Batey (Chairman)	☎ 07802 167212
Councillor Helen Bradford	☎ 07841 528820
Councillor Keith Scantlebury	☎ 07305 590056
Councillor Paul Hedley	☎ 01670 530566
Councillor Allan Douglas	☎ 01670 829078
Councillor Mike Trimming	☎ 01670 820047

Councillors can be contacted on the numbers listed above or alternatively you can email any queries or questions to clerk@eastbedlingtonpc.org.uk

The Parish Council has a communications policy and will respond to all enquiries to the Parish Office within 7 working days.

PARISH COUNCIL MEETING DATES

Parish Council meetings are generally held on the first Tuesday of every month. During the restrictions in place to control the Covid-19 pandemic, all meetings will be conducted via ZOOM virtual conferencing. Links to the meetings are posted on our website and on our agendas. Remaining dates for 2020/2021 are:

Tuesday 2 March 2021 Tuesday 6 April 2021

If there is a matter you would like the council to discuss, you must write to the Clerk to request that it be considered by the Council. Decisions or 'resolutions' can only be made on agenda items at a meeting of the full Council. Individual parish councillors do not have decision making powers.

There is a period of 15 minutes prior to the start of the agenda, during which members of the public can raise matters of concern or comment on agenda items. All matters raised are noted in the minutes, though may not be responded to until a later date, when research or verification has been completed.

Your Parish Team

Ron Thornton

**Parish Clerk & Responsible
Financial Officer**

clerk@eastbedlingtonpc.org.uk

Mobile: 0752 842 8609



Jenny Tindale

Deputy Clerk

jennytindale@btconnect.com

Mobile: 07900 683 675



Parish Office

East Bedlington Community Centre
16 Station Street
Bedlington
NE22 7JN

☎ 01670 828808

www.eastbedlingtonpc.org.uk

During the Covid-19 restrictions our staff will be mainly working from home and should be contacted via email or via the mobile numbers listed.

MP

Ian Lavery MP
Wansbeck Constituency
7 Esther Court, Wansbeck Business Park,
Ashington, NE63 8QZ

Tel: 01670 852494

Email: ian.lavery.mp@parliament.uk

NCC COUNTY COUNCILLORS

Bedlington East Ward

Councillor Bill Crosby - 07779 983 656

Sleekburn Ward

Councillor Jeff Gobin - 01670 822539

Meetings

The Parish Council normally meets on the 1st Tuesday of each month at 6.00 pm (with the exception of August) at East Bedlington Community Centre, Station Street, Bedlington NE22 7JN.

During the Covid-19 restrictions our meetings will be held via ZOOM virtual conferencing.

The first 15 minutes of each meeting are allocated to members of the public, who can raise issues and comment on the business to be conducted.

About East Bedlington

The Parish serves the communities of North Blyth, Cambois, East Sleekburn, Bedlington Station and East Bedlington. The Parish consists of two wards, Sleekburn and Bedlington East and has some of the highest levels of economic and health related deprivation statistics in the UK. The Parish is represented by 11 Councillors, whose details can be found on page 23 of this publication and on the Parish website www.eastbedlingtonpc.org.uk

Our population:	Bedlington East Ward	4,818	number of households	2,224
	Sleekburn Ward	4,284	number of households	2134