



## JDR CABLES POWERING ON

Recent visitors to Cambois cannot help but be impressed with the scale of development of the former Blyth Power Station site. The Cambois facility is the next phase of TFK Group and JDR's expansion to build additional capacity and capability with the construction and development of a Subsea HV Cable Facility.

The total project investment will be £130m, including a grant for the Offshore Wind Manufacturing Investment Support. The project has developed at pace, with a substantial cash injection from TFKable which has been made to JDR to support the business and the investment. Additional loan financing for construction is being provided by 3 banks and further support is provided by UK Export Finance in the form of an Export Development Guarantee. Funding for the project was finalised in 2021 and construction started in November 2022. The site is to be operational in 2025.

When constructed, the facility will create 171 jobs and

*Continued on page 2*

Northumberland Energy Park (NEP) 1 Site - Progress to date:



## Gallagher Park Live

**Are you ready to rock? Your free festival is back for 2024!**



We are currently working behind the scenes to put together a fun-filled day for all the family and are excited to announce our headline act for 2024 "The UK Rock Show".

Get ready to be transported back to the 80s heyday of classic rock, combining the feel of a rock festival with the atmosphere of a rock arena tour.

Expect amazing lighting and exacting attention to detail, as this amazing 5 piece band recreate hits from rock gods such as Journey, Aerosmith, Def Leppard, Bon Jovi, Kiss, AC/DC, Van Halen and many more!

*Continued on page 3*

# Investment in the Parish

safeguard a further 270 at JDR's other UK plants.

The project takes up circa 85,000m<sup>2</sup> of internal production and external storage, with direct quayside access to Blyth Estuary and the North Sea.

The project outline is the Manufacture of offshore wind array cables at 66 and 132 kV, with the finished product being loaded out across the quay. The facility will house dedicated plant for production of energy cables, assisting in reducing UK dependence on oil and gas, and increasing renewable energy - and its all happening in Cambois!

Some staffing is already in place, including a Resourcing specialist who is responsible for the recruitment and attraction of future talent for the new facility. The person lives near to the site and has a wealth of local knowledge which will assist in hiring staff for the new facility. JDR plan to advertise using their website, social media and locally.

171 projected staff will be needed for the Cambois site including:

- 7 Stores
- 15 maintenance
- 120 production
- 23 Quality and HSE
- 6 staff across support departments

JDR also identify training needs for new employees recruited into roles and are members and contributors to the Investment in Talent Group which was set up by the Offshore Wind Industry Council and Energi Coast Skills Group to ensure that the industry attracts a wide, diverse pool of talent with the right training and development of skills.

JDR have a well established internal and external talent and resourcing model to attract a range of diverse and skilled talent in the market this will include:

- Careers Fairs in the local community.
- Proven relationship links with local universities and colleges.
- Advertising on LinkedIn, CareerBuilder, Indeed and the JDR website and local job centres.
- Preferred Supplier list with agencies in the region as required.
- Talent management and career pathing internally.

The Parish Council hopes that the facility will provide an opportunity for our residents to find long term employment. Details on current vacancies can be found by visiting the JDR website

<https://www.jdrcables.com/careers/> or by contacting the Recruitment Specialist - Ryan Pattinson via email - [ryan.pattinson@jdrcables.com](mailto:ryan.pattinson@jdrcables.com)

## Community Directory

Did you know the Parish Council produces a Business Directory listing retail premises throughout East Bedlington? It's really handy, especially if you are new to the area. If you have an online business or work from home, you can list your service in our online directory - its FREE. Contact our Assistant Clerk Tina for more information on 01670 828808.

Accompanying our incredible live music line up on Saturday July 13, we will have a great selection of market stalls, food vendors, an exciting fun fair, street theatre, community stalls, youth zone, and a licensed bar. The day will start at 11am and play through till 9pm. Other bands/artists include:



High energy band with a set full of banging tunes. The “Fish” will certainly get the party started!



Classic Songs From The Golden Era Of 70's Americana. Featuring music made famous by Eagles, CS&N, Fleetwood Mac, Neil Young, Steely Dan, America, and Santana.



Join the Rock Choir as they perform a selection of up-beat songs which are sure to have you up on your feet and singing along.



Join Ryder as they perform their own original songs which are sure to have you up on your feet. Check out their single release on our facebook page!



Paying tribute to over 20 legends, including Queen, Prince, Michael Jackson, Bruno Mars, Take That and ELO.



A powerful rock combo with a punk edge performing hits by Thin Lizzy, ZZ Top, The Jam, The Cure and The Cult.



Go back in time to the 80's, with hits from Duran Duran, Aha, Erasure, Wet Wet Wet, Culture Club and Dexys Midnight Runners.



Full of glitz, glam and grooves. Expect a repertoire of songs from legends Chic, Chaka Khan, Luther Vandross, Sister Sledge, Donna Summer, Kool & The Gang, Bee Gees, Diana Ross, Dan Hartman and Grace Jones.

**For more information, follow our Facebook Page 'Gallagher Park Live'.**

### We're Going Digital

We have been thinking of ways to make our newsletter more sustainable and environmentally friendly and have made the decision to go digital by producing e-newsletters.

An email newsletter is a recurring email sent to subscribed contacts, containing news articles and updates regarding the surrounding area.

We feel this will be beneficial, as it will allow us to send out newsletters on a more frequent basis, keeping you up to date with all of the latest information and events in your area.

If you wish to subscribe to our e-newsletter, please send your email address to [clerk@eastbedlingtonpc.org.uk](mailto:clerk@eastbedlingtonpc.org.uk)

**We will be printing a small amount of copies, which will be available to collect from the Parish Office and other businesses around East Bedlington for those who do not wish to/are unable to subscribe. Copies will also be uploaded to the Parish website to view along with past editions.**



# Staffing Changes



After almost fifteen years steering the Parish Council on a steady course, our Clerk and Responsible Finance Officer Ron Thornton is retiring. Whilst elected members come and go, Ron has been at the forefront of developments in the Parish, ensuring that schemes were adequately funded and that sound governance prevailed.

Under his guidance, East Bedlington was the first of the “new” Parish Councils to produce a Parish Plan, which mapped out the residents’ aspirations for the Council to deliver over a five year period. Along with Jenny, his deputy, the Parish Council managed to secure the largest

Big Lottery (Reaching Communities) funding award in Northumberland and the third biggest award in the UK to ensure that East Bedlington could have its own community centre. The facility is viewed as a beacon of good practice and is well used by residents and community groups.

Sound financial management has ensured that during his period in office, the Parish Council has kept precept increases to a minimum and once again this year a budget was prepared to avoid any rise in the Parish Council element of the council tax.

Ron grew up in Bedlington Station and has always supported the elected members to deliver the best possible outcomes in terms of service delivery and regeneration.

Jenny Tindale, who has worked along side Ron for over twelve years, has taken over as Parish Clerk. Having completed professional qualifications, she will be drawing on the experience gained with the Parish Council, Wansbeck District Council and the Voluntary & Community sector, to ensure the community’s aspirations continue to be met and that good governance and standards in public office are maintained.

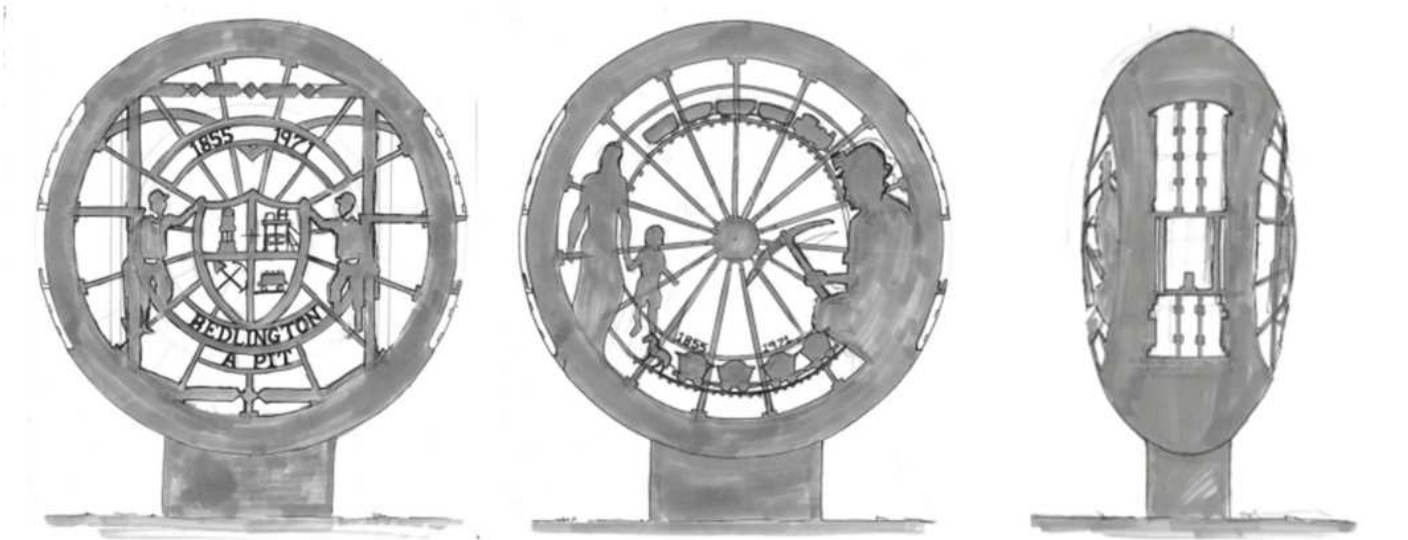
In March this year, the Parish Council appointed Tina Rowell as Assistant Clerk. Tina has previously worked at Pegswood Parish Council and will be developing her knowledge and skills within the industry. She has a passion for community engagement and organising events and is looking forward to getting to know the area and local residents.

The staff team is completed by Andrew Thornton, our Outdoor Services Officer who will be a familiar face around the Parish as he checks play areas, floral displays, bus shelters and seating.

Chairman Keith Grimes said “it has been a privilege to work with Ron over the years. He could always be relied upon to provide sound counsel and advice. Myself and all the Council Members wish him well in his retirement. Jenny, Tina and Andrew are a fine team and I look forward to working with them going forward.”

Ron will not be disappearing completely as he has recently been independently appointed to the East Bedlington Community Centre board of trustees.

# ELLIPSOID PROJECT



This memorial will be funded by East Bedlington Parish Council and County Councillor Rebecca Wilczek and external funding. It has been designed to commemorate the life of the Bedlington 'A' pit, which worked for 116 years—from 1855 to 1971.

There is nothing, apart from the ventilation pipe, which declares that Bedlington Station was once a pit village, and that coal mining was a key part of life in Bedlington Station. As a result, the Parish Council felt a memorial would be a fitting tribute to the men who tirelessly worked at that time, with some sadly losing their lives at a very young age.

The front face of the memorial bears the NUM badge and reflects one side of the Lodge Banner, which was created in time for the 1947 Northumberland Miners' Picnic, with the rear depicting the fact that ponies worked in this mine until the day it was closed.

The sides of the ellipsoid have a miner's lamp, and feature the revolutionary rails made by the Bedlington Iron Works in 1819, which were used by George Stephenson on the Stockton & Darlington Railway.

The Memorial will be constructed in stainless steel, will be illuminated, and will stand two metres tall, on a base made to resemble a block of coal.

It will be placed near the entrance to the Bower Grange estate, and will form part of the planned Heritage Trail. Subject to planning consent, the work is expected to be completed this year.



# Cambois

## CAMBOIS TUTE

Creative charity 'The Tute', at the Cambois Miners Welfare Institute, offer regular free creative writing and dance workshops, alongside weekly creative playgroups for children under the age of 6. All welcome!

For more information, please email [admin@thetute.uk](mailto:admin@thetute.uk)

**Make sure you keep up to date with the latest events by following 'The Tute' Facebook Page.**



The Tute has successfully secured funding from the UK Government, through the UK Shared Prosperity Fund, allowing them to carry out even more creative projects this year.

They are kicking off their 'Rude Health' project with an open invitation into the Tute on 20th and 21st July, where they will host their Art Show.

The weekend will begin with a free meal for the community, followed by the grand opening, where the building will be open all weekend to view the artwork submitted.

If you're an artist, or passionate about art and you'd like to take part, submit your work to the show. Please email your name, postcode and a photo of the submission (max 3 pieces per person) to [danielle@thetute.uk](mailto:danielle@thetute.uk) - Deadline - 1st July.

Those displaying work may choose to put the work up for sale and will not be charged any commission. The event is about celebrating creativity in the community, get involved!

## MEMORIAL GARDEN

The Parish Council are working with Northumberland County Council to develop a disused area of land opposite Unity Terrace to create an attractive, low maintenance garden. When complete, planting will be added to commemorate Her Majesty Queen Elizabeth II.

Current plans include fencing to the North and East of the plot, raised beds planted with perennial evergreen/flowering shrubs and a statement tree. Keep an eye out for further updates on progress.



# Coming Soon

## HERITAGE GARDEN PLAY PARK

During 2024, the Parish Council will fulfil its plans to renew the play facilities in Heritage Gardens. Quotations are currently being sought to supply new equipment. We will be moving existing area to the grass enclosure and re-surfacing the existing area, adding a goal mouth and basketball net, along with a safe surface for roller skating or ball games.

The new equipment will be part funded from our repairs and renewals fund, a valued contribution from Councillor Rebecca Wilczek's Members Local Improvement Schemes Fund and external funding.

The play equipment is designed for children aged 8 years and under, with the resurfaced goal mouth and hoop area supporting facilities for older children.

## BEDLINGTON STATION BUILDING

We know that many residents were disappointed to see the South Building on the platform demolished. Following the clearance of the site, the Parish Council is still intending to take ownership of the remaining North building and create a sustainable facility to display the rich heritage of our Parish and exciting innovation now taking place in Sleekburn ward.

We are currently negotiating with Network Rail and hope very soon to be taking possession of the building and commence refurbishment. We intend to retain the character of the existing structure and are proud to have managed to secure the only remaining building on the Northumberland Line.

The project developed by our team of officers has been put forward for inclusion in the Bedlington Place Plan and submitted to the Borderlands Growth Initiative Deal for consideration. The Parish Council has set aside funds to contribute to the refurbishment works. We have met with the Railway Heritage Trust to identify additional funding to help retain the integrity of the building. Additional external funding will be sought to ensure that the project is finished to a high standard.

Morgan Sindall will be commencing work during the school summer break to remove the brick planters which have been a source of anti-social behaviour in recent years.

A new green landscaping scheme will be introduced to improve the aesthetics of the town centre. An indicative scheme is shown and once we have received the new designs we will share them with you via our web site , notice boards and on our Facebook page.

We are looking forward to contributing to the positive transformation of the town centre.



## BERWICK BANK WIND FARM

SSE Renewables is pursuing the development of Offshore Export Cables, Onshore Export Cables, an Onshore Converter Station and associated agreed grid connection point at the existing Blyth National Grid substation near Cambois, Northumberland, known as the Cambois Connection.

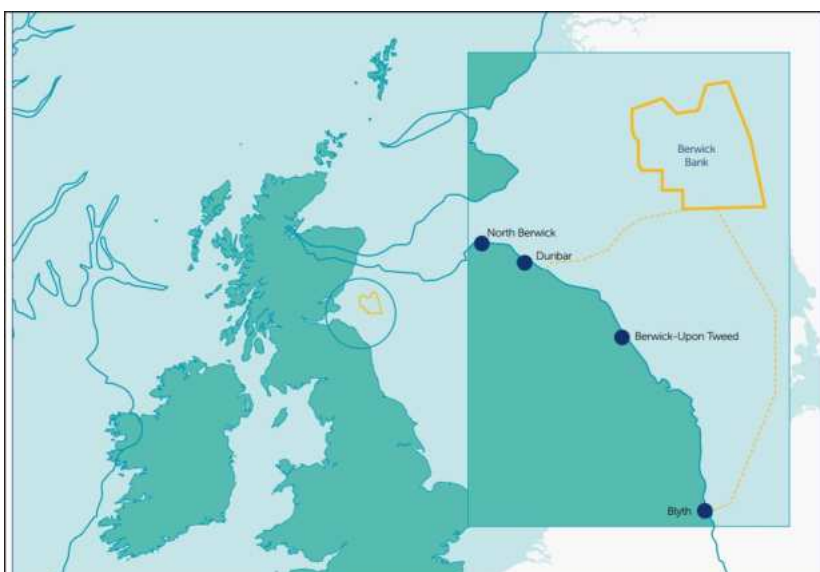
The purpose of the Cambois Connection is to facilitate the export of green energy from Berwick Bank Wind Farm, located in the outer Firth of Forth, to the Blyth substation in Northumberland.

Berwick Bank Offshore Wind Farm has the potential to deliver up to 4.1 GW of installed capacity, making it one of the largest offshore opportunities in the world. The Project has secured two connection points to the UK electricity grid. One in East Lothian and another in the Blyth area of Northumberland. The project will be capable of generating enough clean, renewable energy to power over six million homes. If approved for delivery, Berwick Bank could contribute 37% of the UK's target of 11 GW of installed offshore wind capacity by 2030.

The onshore elements of the Cambois Connection are proposed to be situated on land near Blyth and the villages of Cambois and East Sleekburn. However, once installed, there will be limited permanent infrastructure visible above ground.

SSE Renewables held public consultation events in May and September 2023 welcoming residents' comments, observations and questions prior to the submission of the formal planning application.

In addition to the direct jobs created in the construction of the scheme, it is hoped that further jobs could be created in supply chain industries. In total, up to 9,300 UK jobs could be created over the lifetime of the project. Should planning be granted, it is hoped that construction can begin in 2027. SSER welcomes comments on the proposals via email [berwickbank@sse.com](mailto:berwickbank@sse.com)





## DELIGHT FOR DOROTHY—NEW 434 BUS SERVICE

Thanks to the improvement of the 434 bus service, connecting some of the key communities to the forthcoming Northumberland Line, Dorothy of Ridley Terrace, Cambois is now able to meet up with her friend in Amble on a regular basis.

After previously being able to make her way to Amble via bus, Dorothy would later find herself walking home from Bedlington Station where she would battle the cold, wet, British weather as her usual bus service finished too early.

The new and improved 434 bus service, which currently has 2 years funding with NCC and Arriva, with a 3<sup>rd</sup> year option to extend, provides an hourly link on Mondays to Saturdays between Bedlington Station, North Blyth, Cambois, Stakeford, Ashington, Linton and Widdrington Station.

The route was enhanced from September 2023 thanks to funding from the Bus Service Improvement Plan (BSIP) when the service changed from a limited number of off-peak journeys to a full hourly service that runs from 7am to 7pm. It currently serves three railway stations, including Bedlington and Ashington on the soon to be opened Northumberland Line as well as Widdrington, on the East Coast Main Line.

The service has been branded as the “Northumberland Line Connection” and now has an enhanced timetable to improve connectivity for local residents.

Councillor Grant Ward advised that he has noticed an increase on the number of people using the bus due to the frequent service and feels that it will become even more popular once the train arrives at Bedlington Station.



**Local resident Dorothy Pictured with Councillor Grant Ward**

A special thanks to County Councillor Alex Wallace who worked tirelessly to improve this service on our behalf and on behalf of local residents.

### 434 Widdrington Station to Bedlington Station

via Ashington and Cambois - Valid from Sunday, April 14, 2024 to Tuesday, July 16, 2024

#### Monday to Friday - Widdrington Station Turning circle

	434	434	434	434	434	434	434	434	434	434	434	434
Bedlington Station Clayton Arms	--	0745	0900	1000	1100	1200	1300	1400	1515	15	1815	1915
East Sleekburn Bypass	--	0748	0903	1003	1103	1203	1303	1403	1518	18	1818	1918
North Blyth Club	--	0752	0907	1007	1107	1207	1307	1407	1522	22	1822	1922
Cambois Browns Farm	--	0757	0912	1012	1112	1212	1312	1412	1527	27	1827	1927
Stakeford Half Moon	--	0804	0919	1019	1119	1219	1319	1419	1534	34	1834	1934
Ashington Bus Station	0658	0813	0928	1028	1128	1228	1328	1428	1543	43	1843	1941
Ashington Station Road-Town Hall	0702	0817	0932	1032	1132	1232	1332	1432	1547	47	1847	--
Linton Orchard View	0711	0826	0941	1041	1141	1241	1341	1441	1556	56	1856	--
Widdrington Station Mile Road	0718	0833	0948	1048	1148	1248	1348	1448	1603	03	1903	--
Widdrington Station Turning circle	0723	0838	0953	1053	1153	1253	1353	1453	1608	08	1908	--

#### Monday to Friday - Bedlington Station Clayton Arms

	434	434	434	434	434	434	434	434	434	434	434	434
Widdrington Station Turning circle	--	0725	0855	0955	1055	1155	1255	1355	1455	1610	1710	1810
Widdrington Station Mile Road	--	0728	0858	0958	1058	1158	1258	1358	1458	1613	1713	1813
Linton Orchard View	--	0736	0906	1006	1106	1206	1306	1406	1506	1621	1721	1821
Ashington Station Road-Town Hall	--	0745	0915	1015	1115	1215	1315	1415	1515	1630	1730	1830
Ashington Bus Station	0706	0751	0921	1021	1121	1221	1321	1421	1521	1636	1736	1836
Stakeford Half Moon	0713	0758	0928	1028	1128	1228	1328	1428	1528	1643	1743	1843
Cambois Browns Farm	0720	0805	0935	1035	1135	1235	1335	1435	1535	1650	1750	1850
North Blyth Club	0725	0810	0940	1040	1140	1240	1340	1440	1540	1655	1755	1855
East Sleekburn Bypass	0729	0814	0944	1044	1144	1244	1344	1444	1544	1659	1759	1859
Bedlington Station Clayton Arms	0735	0820	0950	1050	1150	1250	1350	1450	1550	1705	1805	1905

#### Saturday - Widdrington Station Turning circle

	434	434	434	434	434	434
Bedlington Station Clayton Arms	--	0800	0900	00	1800	1900
East Sleekburn Bypass	--	0803	0903	03	1803	1903
North Blyth Club	--	0807	0907	07	1807	1907
Cambois Browns Farm	--	0812	0912	12	1812	1912
Stakeford Half Moon	--	0819	0919	19	1819	1919
Ashington Bus Station	0713	0828	0928	28	1828	1926
Ashington Station Road-Town Hall	0717	0832	0932	32	1832	--
Linton Orchard View	0726	0841	0941	41	1841	--
Widdrington Station Mile Road	0733	0848	0948	48	1848	--
Widdrington Station Turning circle	0738	0853	0953	53	1853	--

#### Saturday - Bedlington Station Clayton Arms

	434	434	434	434	434	434
Widdrington Station Turning circle	--	0755	0855	55	1755	1855
Widdrington Station Mile Road	--	0758	0858	58	1758	1858
Linton Orchard View	--	0806	0906	06	1806	1906
Ashington Station Road-Town Hall	--	0815	0915	15	1815	1915
Ashington Bus Station	0706	0821	0921	21	1821	1920
Stakeford Half Moon	0713	0828	0928	28	1828	--
Cambois Browns Farm	0720	0835	0935	35	1835	--
North Blyth Club	0725	0840	0940	40	1840	--
East Sleekburn Bypass	0729	0844	0944	44	1844	--
Bedlington Station Clayton Arms	0735	0850	0950	50	1850	--

The new timetable can be accessed by the following link: <https://www.arrivabus.co.uk/find-a-service/434/widdrington-station-to-bedlington-station>

# Environment

## LET'S PUT WASTE IN ITS PLACE



Keeping rubbish out of the environment is important to prevent harm to wildlife and our economy, with proper waste disposal allowing for efficient recycling and resource recovery.

We have recently received reports of a significant increase in litter within our Parish, specifically in the North View/South View area of Cambois.

The Parish Council would like to gently remind residents of the large number of bins provided for litter and encourage the use of these bins to reduce waste and keep our Parish clean and tidy.

We understand that there may be times when a bin will be full prior to collection. In this instance, please take your litter home with you.



The Green Dog Walkers Scheme is a community-based campaign to change attitudes about dog fouling. It encourages responsible dog ownership and reminds owners to pick up after their dogs and keep them under control. Responsible dog owners sign a pledge to say that they will clear up after their dogs and will carry spare bags with them, which they will offer to anyone they see not clearing up. They will wear a very distinct arm band or badge to identify them as a Green Dog Walker.

By agreeing to a pledge and becoming a member of The Green Dog Walker Scheme, you are able to collect free poo bags from the East Bedlington Parish Council office.

**Please clean up after your dog and use the bins provided to dispose of the waste. If you cannot see a bin close by, please take your dog waste home with you.**

# Community Safety

## OPERATION CAPIO

Operation Capiro, which was launched in November 2023, aims to disrupt anti-social motorcycle use across the North East, with a focus on identifying prolific nuisance riders and seizing their vehicles. The campaign has come after a £196,000 grant from the Home Office's Safer Streets funding.

The dedicated operation builds upon recent successful work carried out by police and partners to tackle pockets of disorder and act on the concerns of residents.

This investment will allow for an increase in dedicated activity to target offenders who are causing the most harm – using innovative tactics such as drones to build intelligence and bring those responsible to justice.

In addition, a pilot taskforce covering South Tyneside and Sunderland has also been set-up as part of the wider crackdown to specifically target anti-social use of motorcycles in both areas.

Officers have urged people to further assist their enquiries by sharing details such as:

- Vehicle registration plate number for offending vehicles
- Time of day and date of incident
- Where the motorcycle was located, and where it was travelling
- Description of riders including how many, clothing worn and helmet or headgear
- Description of the motorcycle(s) involved – including colour, make, model if known – and any other distinctive features

Members of the public can report concerns to Northumbria Police using the 'Report' pages of the website, or by calling 101.

In an emergency, or where a crime is taking place, always dial 999.



# East Bedlington Community Centre

The Centre is managed by a Board of Trustees - local people who care passionately about providing activities for the community. Whilst the Board looks after things such as governance and policies, business planning and marketing, a huge part of our success is our wonderful team of staff. In keeping with our original principles, that the Centre would be run by the community for the community, we are proud that all our staff live locally in South East Northumberland.

## MEET THE TEAM



**Stacey Price** is our Centre Manager. Living in Bedlington Station, Stacey is involved in lots of community activities and has a wealth of local knowledge to help identify activities residents and visitors are interested in. She is passionate about providing high quality customer service and ensures that each and every visitor to the centre has an enjoyable visit.



**James Hunter** is our caretaker. He oversees day to day safety checks and is a dab hand at DIY. James plays a key part in the smooth running of the centre.



**Gemma Simm** has been employed at the Centre for 8 months and has proven to be a great addition to the team. Another local lady, she excels in her role as Facilities Assistant, multi-tasking across the centre with every day activities. You will also catch her in Platform 1 at the weekend.

**Natalie Cummings** has been part of the team for 1 year. A resident of Bedlington Station, Natalie does an excellent job ensuring the Community Centre is clean and tidy ready for your arrival, helping with room set ups and making sure everything is in the right place. She is an incredible asset to the team.



**We are always happy to register casual staff for Platform 1. We also support volunteering opportunities to help you get back into work and work placements including school work experience. Contact Stacey for more information on 016710 828808**

**The venue is fully accessible to all floors. It is available for hire for private functions and corporate events, children's parties, weddings, anniversaries, birthday parties, training events, exhibitions, art and craft sessions. For more information, contact Stacey Price, Centre Manager on 01670 828808 or alternatively you can email [eastbedlingtoncommunitycentre@gmail.com](mailto:eastbedlingtoncommunitycentre@gmail.com)**

# East Bedlington Community Centre

## SUMMER ACTIVITIES



Pride Action North Youth Team will be hosting a range of free summer sessions for children aged 8-12 years. Events run from 10.30-12.30 on the following dates throughout August:

- Monday 5, Tuesday 6 & Wednesday 7
- Monday 12, Tuesday 13 & Wednesday 14
- Monday 19, Tuesday 20 & Wednesday 21



Watch out for posters and social media posts, revealing the full timetable of activities over the upcoming weeks. Each child will receive a free lunch bag to take home at the end of each session. It is recommended that you book early to avoid disappointment.

Spaces are limited to 25 children per session.

Contact the Parish Council on 01670 828808 to book your child's place.

Please do not contact via Facebook Messenger.

EAST BEDLINGTON  
Parish Council



**THE READING AGENCY Summer Reading Challenge**

## Marvellous Makers

Bedlington Station library  
Making your summer marvellous.

Bedlington Station Library will have a series of simple craft events in conjunction with the East Bedlington Community Centre on the following dates:

Tuesday 20th August - 9.30am-11.00am  
Friday 23rd August - 13.30pm-15.00pm

Tuesday 27th August - 9.30am-11.00am  
Friday 30th August - 13.30pm-15.00pm

Places are limited, so please book beforehand. Speak to a member of staff or visit: [nlandlibs.eventbrite.com](http://nlandlibs.eventbrite.com)



Marvellous Makers illustrations by Heather Cooke and logo artwork by Louise Downard. All © The Reading Agency 2020.



## Bedlington Station Library Bookworms Group

**Weekly sessions in Term Time ONLY**  
**Friday 14:00 - 14:30**

Join us in the Library for a fun **storytime!**

**About this event**  
Recommended for ages approx 2-5  
**Parents must stay for the duration of the session.**  
**Booking is essential.**  
Go to: [www.eventbrite.co.uk](http://www.eventbrite.co.uk) and search 'Northumberland Libraries' to book your free ticket



# East Bedlington Community Centre

## Regular Weekly Activities

Monday	11am-1pm	Bridge For Pleasure (from September)
	6pm - 7pm	WOW Fitness contact Emma Walton on 07718 955823
	6pm - 7pm	Jilates—Pilates with Jill contact Jill on 07941 691365 (Platform 1)
Tuesday	9am-1pm	Library
	9.30am -12.30pm	Community Crafters - Just pop into a class
	10am - 12 noon	East Coast Swing Band Practice Session
	10am—12 noon	Kinship Carers (every second Tuesday)
	10.30am	Bedlington Walking Group - Meet at Community Centre
Wednesday	10.30am-12.30pm	Bingo & a Butty—3 games for £3
	1pm - 4pm	Bedlington Art Group - Contact Len Smith on 07790 656978
	9.30am-10.30am	Yoga—Contact Fiona on 07301629038
	6pm - 7pm	WOW Fitness contact Emma Walton on 07718 955823
	6pm—7pm	Jilates- Pilates with Jill contact Jill on 07941 691365
Thursday	10am-11am	Jilates- Pilates with Jill contact Jill on 07941 691365
	10.30am-12.30pm	Cuppa & Cake—£2.50 for unlimited coffee or tea
	6.15pm - 7.15pm	Nintai Dragons Karate (ages 8-13)
Friday	10am - 3pm	Bedlington Station Library Service (Bayard Room)
	10am - 12 noon	Welcome Hub (including Bedlington Food Bank)
	6pm-8pm	Youth Club (8-12 year old) free of charge
	7pm - 11:30pm	Live Music - Bands on stage from 8:45pm ticket entry only
Sunday	9:30am - 12:30pm	Hope Church and Junior Hope Church

We are always looking for new activities/clubs to join us here at the Community Centre. If you would like more information on room costs, availability or have a general question, please call 01670 828808 Ext 2 or email [eastbedlingtoncommunitycentre@gmail.com](mailto:eastbedlingtoncommunitycentre@gmail.com)

# Live Music at Platform 1

Supporting Live Music  
Join us every Friday doors open at 7pm



<b>June 2024</b>		
07/06/2024	Jarra Dukes	£3.00
21/06/2024	Available for Hire	
28/06/2024	Rebel Radio	£3.00
<b>July 2024</b>		
05/07/2024	Blistered Molly	£3.00
12/07/2024	The Andy Rayner Band	£3.00
19/07/2024	Available for Hire	
<b>August 2024</b>		
02/08/2024	Teresa Watson	£3.00
09/08/2024	West Coast Band	£3.00
16/08/2024	Comedy Night	£7.00
30/08/2024	Black Ice - AC/DC Tribute	£3.00
<b>September 2024</b>		
13/09/2024	Sugar B's	£3.00
14/09/2024	The Paul Rodgers Story	£7.00
20/09/2024	Stacy Green as Cher - CHERished	£7.50
21/09/2024	Stacey Green as PINK!	£7.50
<b>October 2024</b>		
04/10/2024	RainMaker	£3.00
11/10/2024	OVERDRIVE	£3.00
18/10/2024	RIVERAIN	£3.00
26/10/2024	Genius The Fool	
<b>November 2024</b>		
08/11/2024	Comedy Night	£7.00
15/11/2024	Traction	£3.00
22/11/2024	Fizzyfish	£3.00
29/11/2024	Pope Smooth	£3.00
30/11/2024	We are Champion	£8.00
<b>December 2024</b>		
06/12/2024	Rebel Radio	£3.00
20/12/2024	Smokin Spitfires	£7.00

**Ticket entry only.** Tickets available from venue prior to event in person or over phone debit payment by calling 01670 828808

**allocated seating and waiter service available - Listing can be subject to change.**

Platform 1 - 16 & 17 Station Street ~ Bedlington Station ~ NE22 7JN ~ Tel: 01670 828808

# Growing Communities

**Are you feeling lonely, isolated, struggling to make ends meet or buy food? Not sure where to get the best advice and support?**

## East Bedlington Parish Council Welcome Hub

- Free cuppa and a light snack, every Friday between 10am & 12 noon
- Some friendly faces to chat to - Chat to a Parish Councillor
- Citizens Advice Bureau (9am - 12 noon)
- Support from Communities Together
- Healthwatch (last Friday of month)
- Pop up Police Station (monthly)
- Bedlington Food table available



## EAST BEDLINGTON PARISH VEGETABLE, CRAFT & PRODUCE FESTIVAL

It's nearly time for our annual Craft & Produce Festival. We invite entries in the following categories:

- Vegetables:** Leeks, (pot and blanched) Onions, Potatoes, Peas/Beans, Cucumber, Tomatoes, Carrots, Beetroot, Pumpkin.
- Fruit:** Apples, Pears, Plums and soft fruit.
- Eggs:** Duck, Hen, Goose.
- Preserves:** Honey, Jam, Marmalade, Chutney etc.
- Pickles:** Onions, Beetroot, Gherkins, Cabbage, Piccalilli, Eggs.
- Wine:** The list is endless. Must be made from scratch (no kit wines)
- Beer:** Must be home made.
- Cut Flowers:** A vase of garden flowers
- Crafts:** Knitting, Crochet, Card making, Stick dressing, Lace making, Embroidery, Quilting, Basket weaving ....
- Home bakes:** Cakes, Pies, Quiches, Scones.

### SHOW DAY

Saturday 31 August 2024

Entry forms in this newsletter and available from the Parish Office.





# ANNUAL AWARDS

## **Colin Parker Good Neighbour Award**

Do you know someone who goes the extra mile to help out without seeking any financial reward? Someone who takes the time to make sure others are alright or helps out with little errands that mean so much? **Nominate them for this award.**

## **Brian Richmond Sporting Achievement Award**

Do you know someone who has excelled at sport? Someone who has worked hard to promote their chosen sport, or volunteers their time to help others participate in sport? **Nominate them for this award.**



## **Apprentice of the Year**

Do you have an apprentice who stands out from the crowd? Someone who contributes to your workforce, bringing enthusiasm and passion to their work? Nominate them for this award. Apprentice must be working within the Parish boundary.

**All** Community Award nominees must live within the East Bedlington Parish Council boundaries. They may participate in their activities outside the parish. Nominations should be received at the Parish Office no later than **midday Friday 19 July 2024**. All nominees will be invited to our **Awards Evening Saturday 27 July 2024** where there will be a selection of presentations.

Volunteer of the Year Award 2022  
Jackie & Steve Wilson pictured  
with Councillor Dawn Crosby

## **Volunteer of the Year & Volunteer Group of the Year**

Do you know an individual or group who willingly undertakes voluntary work to enrich the lives of others? Someone who wants to make a difference by volunteering in our community? The individual nominee must live in the Parish. The group nominee must carry out activities in the Parish.

# Support & Advice

## EAST BEDLINGTON PARISH COUNCIL SMALL GRANTS SCHEME

The Parish Council operates a small grants scheme to support voluntary & community sector groups who are either based within the boundaries of the Parish, or who are based outside, but still deliver a significant service to the residents of East Bedlington, on a not for profit basis.

Application forms are available from the Parish Office or they can be downloaded from the Parish Council website [www.eastbedlingtonpc.org.uk](http://www.eastbedlingtonpc.org.uk)

**Community Groups must have a constitution and bank account in their Group name. We do not fund individuals; activities which are normally statutory provision; businesses; salaries or wages; and cannot fund retrospectively.** Typical awards are between £50 and £250 and each application is considered on its merit. For more information please contact the Clerks on 01670 828808 or email [clerk@eastbedlingtonpc.org.uk](mailto:clerk@eastbedlingtonpc.org.uk)

2024 Deadline dates for completed applications

Tuesday 18 June 2024

Tuesday 17 September 2024

Tuesday 10 December 2024

Tuesday 18 March 2025

**NHS Crisis Team:** For urgent support with your mental health phone 0800 652 2861. Text number for people with hearing loss or communication difficulties: 07887 625 277.

**NHS Northumberland Talking Therapies:** Free psychological treatment for people aged 16+ who have a GP in Northumberland. To self-refer email: [tmn.info@nhs.net](mailto:tmn.info@nhs.net)

**Northumberland Recovery College:** Courses and workshops for adults which promote wellbeing and good mental health. Call: 07866 053717 or email: [nrc@everyturn.org](mailto:nrc@everyturn.org)

**Cygnus Support:** Helping people in Northumberland to improve mental health and wellbeing through counselling, therapy, education and training. Call: 01670 853977 or email: [admin@cygnussupport.com](mailto:admin@cygnussupport.com)

**ManHealth:** Supporting men through difficulties with their mental and physical ill health. Provides advice and support groups including one at Briardale House, Blyth, Mondays 6pm-8pm. Call 01388 320023 or email: [info@manhealth.org.uk](mailto:info@manhealth.org.uk)

**Bedlington Salvation Army Foodbank:** Email: [bedlington@salvationarmy.org.uk](mailto:bedlington@salvationarmy.org.uk)

**Wansbeck Valley Food Bank:** Email: [wansbeckvalleyfoodbank@gmail.com](mailto:wansbeckvalleyfoodbank@gmail.com)

## Are you a kinship carer?

A kinship carer is someone who is raising the child of a relative or friend.

# Come along to our group for kinship carers



A chance to meet, listen, share and support one another.

## Bedlington Kinship Carer Support Group For Bedlington and the surrounding areas

East Bedlington Community Centre  
16 & 17 Station Street  
Bedlington  
NE22 7JN

Contact: Keith Scantlebury  
Email: [scantk2@gmail.com](mailto:scantk2@gmail.com)  
Phone: 07305590056

All kinship carers and special guardians are welcome



Part of the Kinship Group Network  
Bringing kinship carers together



[compass.kinship.org.uk](http://compass.kinship.org.uk)  
[kinship.org.uk](http://kinship.org.uk)



# Community Support

## Northumberland Communities Together

Northumberland Communities Together was initially launched in response to the Coronavirus pandemic. The team proved successful and has now grown to offer a wide range of support to help residents keep safe and well throughout crisis and hardship. The team manage the Household Support Fund, which can provide emergency support for individuals and families, including white goods and clothing.

If you or anyone in your family needs a bit of extra support please get in touch.

- Perhaps your financial circumstances have changed with reduced hours, redundancy or you're on benefit - you may need your benefits checked to ensure you are receiving your full entitlement;
- Worried about fuel bills or financial pressures, we are working with Citizens Advice Northumberland to connect and support families;
- Feeling lonely, overwhelmed or struggling with mental health;
- If you do need food or medicine, please order it online or by phone or ask friends and family to drop it off at your home;
- Worried about someone experiencing domestic abuse or concerned about a neighbour:

Phone the Northumberland Communities Together Response Hub on **01670 620015** 9am-6pm,  
7 days a week or email: [NCT@northumberland.gov.uk](mailto:NCT@northumberland.gov.uk)

All enquiries are treated respectfully by our knowledgeable and professional team



**Fix my street is an online service that lets you report, view or discuss problems (such as graffiti, fly tipping, potholes or street lighting etc) in your area. It is a simple and easy platform to use.**

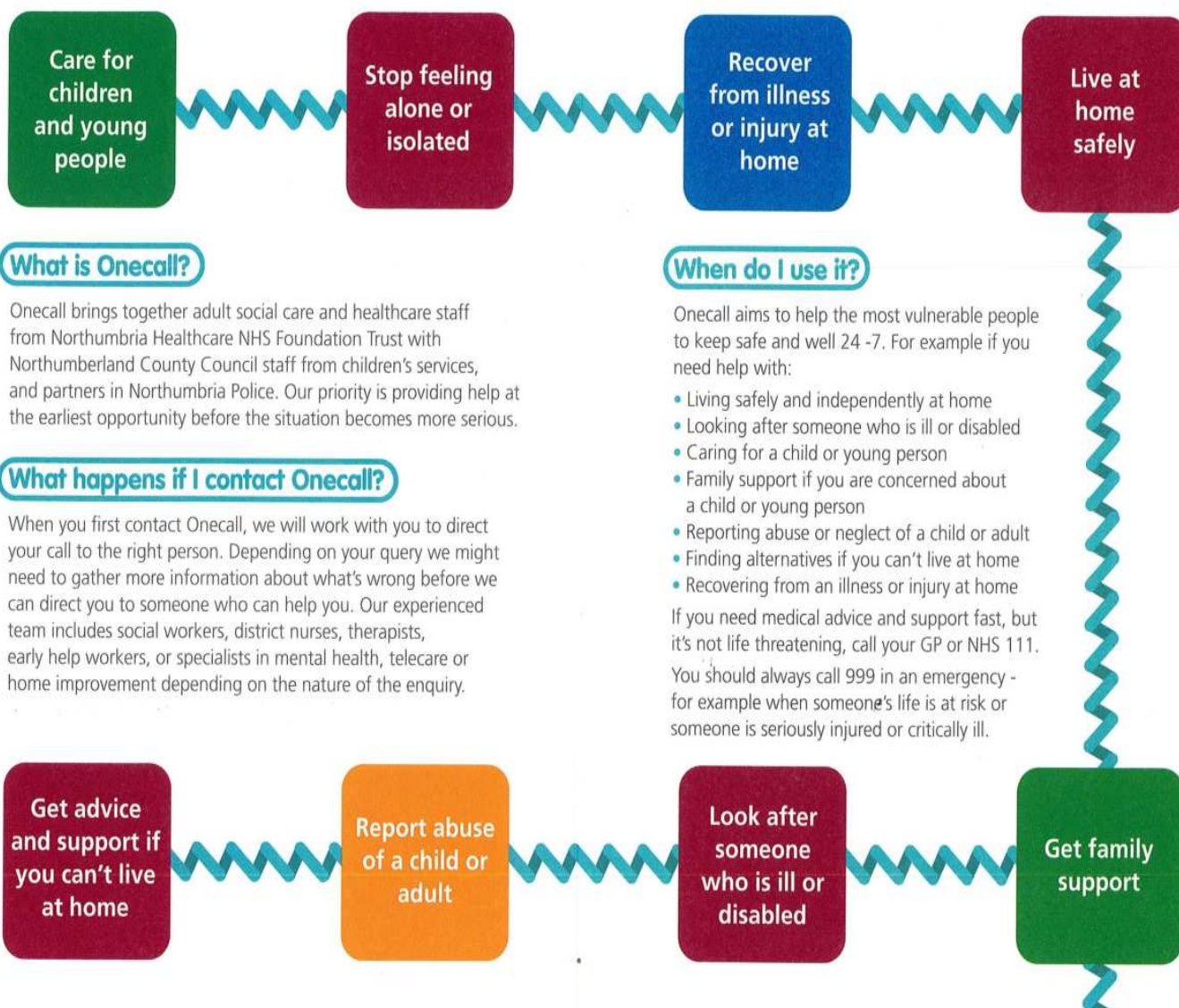
1. All you have to do is mark where the problem is on a map, add a short description, attach a photograph if you wish, and send it off. You don't need to know who's responsible for fixing the problem as the website automatically sends it off to the correct department at Northumberland County Council.
2. Your report is also displayed on the FixMyStreet website, so that others can comment or leave advice.
3. NCC replies directly back to you and is responsible for doing the actual fixing.
4. If you put your postcode in on the homepage, you can see all the problems that have recently been reported in your own area. This is great for tracking what the biggest concerns are in your own community.

If your concerns have not been addressed within the specified timescale, you can speak to your **ward councillor** who will be able to make enquiries on your behalf. Remember to retain the reference number you are given when you are making a complaint to help speed up this process.

# Community Support

## Onecall

No-one likes to be passed around from pillar to post especially when you have exhausted your energies trying to find the best service for your needs. One call is here for clear advice and support.



### What is Onecall?

Onecall brings together adult social care and healthcare staff from Northumbria Healthcare NHS Foundation Trust with Northumberland County Council staff from children's services, and partners in Northumbria Police. Our priority is providing help at the earliest opportunity before the situation becomes more serious.

### What happens if I contact Onecall?

When you first contact Onecall, we will work with you to direct your call to the right person. Depending on your query we might need to gather more information about what's wrong before we can direct you to someone who can help you. Our experienced team includes social workers, district nurses, therapists, early help workers, or specialists in mental health, telecare or home improvement depending on the nature of the enquiry.

### When do I use it?

Onecall aims to help the most vulnerable people to keep safe and well 24 -7. For example if you need help with:

- Living safely and independently at home
- Looking after someone who is ill or disabled
- Caring for a child or young person
- Family support if you are concerned about a child or young person
- Reporting abuse or neglect of a child or adult
- Finding alternatives if you can't live at home
- Recovering from an illness or injury at home

If you need medical advice and support fast, but it's not life threatening, call your GP or NHS 111.

You should always call 999 in an emergency - for example when someone's life is at risk or someone is seriously injured or critically ill.

### NCC Animal Welfare Out-of-hours Service

If you are in possession of a stray dog outside office hours and can't return the dog to its owner, we will arrange for the dog to be collected using our out-of-hours service. Call us on **0345 6006400**, as online forms are only picked up during normal working hours. Times for our out-of-hours service are listed below.

5pm to 10pm, Monday to Thursday | 4.30pm to 10pm, Friday | 8am to 10pm, Saturday/Sunday  
8am to 8pm, bank holidays

# Worship in the Parish

St Andrew's Church - Unity Terrace, Cambois

Service 10.30am 2nd & 3rd Sunday

St John's Church - North View, Bedlington Station

Service 10.30am 1st & 4th Sunday

Contact:

Rev'd Ian Hennebry 01670 823453

Enquiries can also be made to  
reverendianh@gmail.com



## Bedlington Colliery Methodist Church

Minister: Rev. Richard Porter

Senior Steward— Mr. Sam Simmons Tel: 07791 249 409

Visit us online at [bedlingtoncollierymethodist.co.uk](http://bedlingtoncollierymethodist.co.uk)

Contact us by e-mail [collierymeth@btinternet.com](mailto:collierymeth@btinternet.com) or on

<https://www.facebook.com/Bedlington-Colliery-Methodist-Church>



## Can you help the Bedlington Foodbank?

As more and more families are suffering from hardship, demand is growing on the foodbanks.

Donations of non-perishable food such as long life milk, breakfast cereals, flour, tinned foods, pasta, rice, biscuits, tinned vegetables, sauces, tinned fruit, tuna, hot dogs, tea, coffee, sugar, jam and instant mash are gratefully received.

The Bedlington Foodbank will also welcome toiletries, sanitary products, nappies, toilet rolls and cleaning materials.

Donations can be left at East Bedlington Parish Council Office.

Alternatively, you can make arrangements for collections/deliveries by contacting Pauline Fraser on 07391893457.

## Your Councillors

### SLEEKBURN WARD

Councillor Keith Grimes (Chairman)	☎ 07855 711813
Councillor Dawn Crosby	☎ 07714 211877
Councillor Bill Crosby	☎ 07866802510
Councillor Allan Stewart	☎ 07955232714
Councillor Grant Ward	☎ 07989 077884
Councillor Jayne Todd	☎ 01670 898119

### BEDLINGTON EAST WARD

Councillor John Batey (Vice Charman)	☎ 07802 167212
Councillor Len Smith	☎ 07709 656973
Councillor Keith Scantlebury	☎ 07305 590056
Councillor Paul Hedley	☎ 01670 530566
Councillor Rebecca Wilczek	☎ 07779 983 656

**Councillors can be contacted on the numbers listed above or alternatively you can email any queries or questions to [clerk@eastbedlingtonpc.org.uk](mailto:clerk@eastbedlingtonpc.org.uk)**

**The Parish Council has a communications policy and will respond to all enquiries to the Parish Office within 7 working days.**

## PARISH COUNCIL MEETING DATES

Parish Council meetings are generally held at East Bedlington Community Centre on the first Tuesday of every other month (first being May) .

Links to the meetings are posted on our website and details are displayed in our notice boards.

If there is a matter you would like the council to discuss, you must write to the Clerk to request that it be considered by the Council. Decisions or 'resolutions' can only be made on agenda items at a meeting of the full Council. Individual parish councillors do not have decision making powers.

There is a period of 15 minutes prior to the start of the agenda, during which members of the public can raise matters of concern or comment on agenda items. All matters raised are noted in the minutes, though may not be responded to until a later date, when research or verification has been completed.

## Your Parish Team

Ron Thornton

Responsible Financial Officer  
clerk@eastbedlingtonpc.org.uk  
Mobile: 0752 842 8609



Jenny Tindale

Clerk  
jennytindale@btconnect.com  
Mobile: 07900 683 675



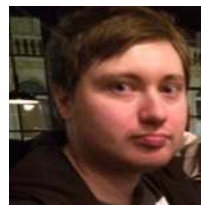
Tina Rowell

Assistant Clerk  
01670 828808  
Clerk@eastbedlingtonpc.org.uk



Andrew Thornton

Outdoor Services Officer  
01670 828808  
Clerk@eastbedlingtonpc.org.uk



## MP

Ian Lavery MP  
Wansbeck Constituency  
7 Esther Court, Wansbeck Business Park,  
Ashington, NE63 8QZ

Tel: 01670 852494  
Email: ian.lavery.mp@parliament.uk

## Meetings

The Parish Council normally meets on the 1st Tuesday of each second month (first being May) at 6.30pm at East Bedlington Community Centre, Station Street, Bedlington NE22 7JN.

The first 15 minutes of each meeting are allocated to members of the public, who can raise issues and comment on the business to be conducted.

## About East Bedlington

The Parish serves the communities of North Blyth, Cambois, East Sleekburn, Bedlington Station and East Bedlington. The Parish consists of two wards, Sleekburn and Bedlington East and has some of the highest levels of economic and health related deprivation statistics in the UK. The Parish is represented by 11 Councillors, whose details can be found on page 21 of this publication and on the Parish website [www.eastbedlingtonpc.org.uk](http://www.eastbedlingtonpc.org.uk)

Our population: Bedlington East Ward 4,818 number of households 2,224  
Sleekburn Ward 4,284 number of households 2,134

## Parish Office

EAST BEDLINGTON  
Parish Council



East Bedlington Community Centre  
16 Station Street  
Bedlington  
NE22 7JN

☎ 01670 828808

[www.eastbedlingtonpc.org.uk](http://www.eastbedlingtonpc.org.uk)

## NCC COUNTY COUNCILLORS

### Bedlington East Ward

Councillor Rebecca Wilczek - 07779 983 656  
[Rebecca.wilczek@northumberland.gov.uk](mailto:Rebecca.wilczek@northumberland.gov.uk)

### Sleekburn Ward

Councillor Alex Wallace - 01670 822539  
[Alex.wallace@northumberland.gov.uk](mailto:Alex.wallace@northumberland.gov.uk)