



A fitting commemoration!

Over 60 local people joined East Bedlington Parish Council as they celebrated completion of their Free Wood Heritage and Well being project. Ian Lavery MP kindly unveiled the commemorative plaque which pays homage to the significance of the Bedlington Iron and Engine works.

The launch event was attended by local residents, rail enthusiasts and civic dignitaries from neighbouring Parish Councils—see inside for more pictures from the day



Pictured left to right: County Councillor Valerie Tyler, Parish Councillor Colin Parker, Clerk to the Council; Ron Thornton, Sculptor Tom Maley, Ian Lavery MP, Barry Mead and County Councillor Jeff Gobin



FREE WOOD HERITAGE & WELLBEING PROJECT continued from page one ..

Local historian Barry Mead who provided the inspiration for the gateway feature GLO-BED-RAIL and nationally acclaimed sculptor Tom Maley responsible for bringing the vision to life were on hand to witness the ceremony.



The concept was derived from the Parish Council's vision to provide affordable leisure and cultural experiences that can be freely accessed and enjoyed by all. It is to the great credit of Councillor Alyson Wallace (former Heritage, Culture and Leisure champion) & Councillor Allan Stewart (Environment Champion) for steering the project to its fruition.

The project was made possible through grants received from the SITA Trust (who funded the wellbeing aspects of the project), and from County Councillors Val Tyler & Jeff Gobin (who funded the heritage element).

The Scheme comprises an outdoor fitness trail, picnic tables, seating, interpretation panels, upgrading of the "Sounding out Bedlington" audio trail, Glo-Bed-Rail

gateway sculpture and plaque.

Parish Clerk Ron Thornton paid tribute on the day to partners and contractors who helped at various stages including: Fresh Air Fitness, Site & Field Services and County Council officers Mike Jeffrey, Ian Graham and Colin Green.

In this issue

	Page		Page		Page
Free Wood Heritage & Wellbeing project	2	Community Centre	8	Not in my Neighbourhood	13
Your new look council	4	Hearing aid service	9	A Family of Teachers	14
Project update	6	Small Grants & Donations	10	Councillor contact Details	15
Report it!	7	Plaque of Honour	10	Parish Contact details	16
East Bedlington		Bob & Helen retire	11	County Councillors	16
		Youth activities	12		
		Macmillan Event	13		



Unveiling the commemorative plaque, Ian Lavery MP said, “ The significance of the Iron & Engine Works in railway history cannot be over estimated and it is to East Bedlington Parish Council’s credit that they honouring the achievement of their ancestors today”

He added that “local industries just down the river at the Port of Blyth are once again at the forefront of technological innovation in the development of renewable energy ” and he expressed his hopes that this would bring much needed employment in the form of permanent, well paid jobs to our community.

Celebrations were completed with an informative heritage talk and slide show presented by Barry Mead along with refreshments at East Bedlington Community Centre.



Ian Lavery, MP unveils the commemorative plaque as sculptor Tom Maley looks on



Top team take up the 'Chains of office'

Elections took place in May across Northumberland to determine the make up not only the County Councils but also the 150 Parishes. Although the seats were not contested in East Bedlington (11 nominations were received for 11 seats), we are delighted to welcome six new Councillors on board.



With decades of experience at their finger tips, Councillor Alex Wallace (Chairman) and Councillor Allan Stewart (Vice-Chairman) took on key roles as the Parish Council begins a new term of office.

Accepting his nomination Councillor Wallace said "A staggering amount of investment has been delivered within the Parish during our first four years, however, we won't sit back on our laurels" he added, "we represent two of the

most deprived wards in England and Wales and fully intend to continue working in partnership with others to deliver the services our parishioners want at a price they can afford".

Councillor Paul Hedley



Paul lives in Hartford Bridge and has strong links with East Bedlington Parish. He is also Chairman of West Bedlington Town Council and a Church Warden.

Councillor Andrea Innes

Andrea lives in the Willows area of Choppington and works for a national company. She believes strongly in the local community and is a member of the Environment and the Planning working group.



Councillor Terry Johnstone



Terry lives in Bedlington and not only serves on East Bedlington Parish Council, but has been elected as a County Councillor for Bedlington West.



Councillor David Graham



David lives in Bedlington Station and strongly believes in community participation. He is an active member of Friends of Gallagher Park and is a former chair of Bedlington Street Fair. He has joined the Communication and Community Liaison working group, the Environment working group as well as undertaking duties as a Parish Councillor for West Bedlington Town Council

Councillor Nichola Hogarth

Nichola is a busy working mum who lives in Bedlington Station. She has taken on the role of Champion for the Finance & General Purposes working group and like many of our new councillors is passionate about making a difference in her local community in particular improving provision of activities for all age groups. Nichola is also an elected councillor of West Bedlington Town Council.



Councillor Jay Davis



Jay lives in East Bedlington and stood as a Parish Councillor after volunteering her services as part of the Parish Plan steering group.

She is a member of all four working groups and has a special interest in the Environment, in particular 'greening up' the Parish.

The new councillors are supported by a further 3 members taking up a second term

Councillor Colin Parker



A former Wansbeck District Councillor Colin is the Communication and Community Liaison Champion, he is passionate about challenging inequalities and is a strong supporter of local schools and community facilities.

Councillor David Armstrong



A former Wansbeck District Councillor Dave puts his skills and local knowledge to good use. He is particularly supportive of voluntary and community groups.

Councillor Joe Dobie



Joe is also an elected councillor at West Bedlington Town Council. When not taking part in council duties Joe is engaged in swimming coaching.



Projects update



Puddlers Paradise

In response to parishioner's requests the Parish Council has recently completed environmental improvements along the stretch of road from Highfield House (next to the finger post) down through Stead Lane (or the Puddlers) to the Bank Top.

The scheme which provides much need seating and floral improvements at bus stops along the route is designed to improve the area for those using public transport whilst making it more accessible to parishioners unable to walk long distances without a rest.

Councillor Allan Stewart, Chair of the Environment Working Group commented that "the Puddlers are now more accessible to parishioners with mobility problems allowing them to enjoy the swathes of daffodils in the spring and the floral displays in summer".

He added "for those unfamiliar with the local name for the Stead Lane, a 'Puddler' was involved in the process of puddling which turned pig into wrought iron and has an obvious connection with the former Iron Works nearby".

Memorial repairs set to go ahead

We are pleased to confirm that we have received approval from the Diocese to begin work on refurbishing the Cambois War Memorial. Once we have received listed building consent we will be appointing a specialist contractor and ensuring that the work is complete in time for the 2014 centenary. The Parish would like to record thanks to Barry Mead, Evan Paton and Cambois Community Association for their early work on this project.





Projects update

GAP SITE STATION STREET

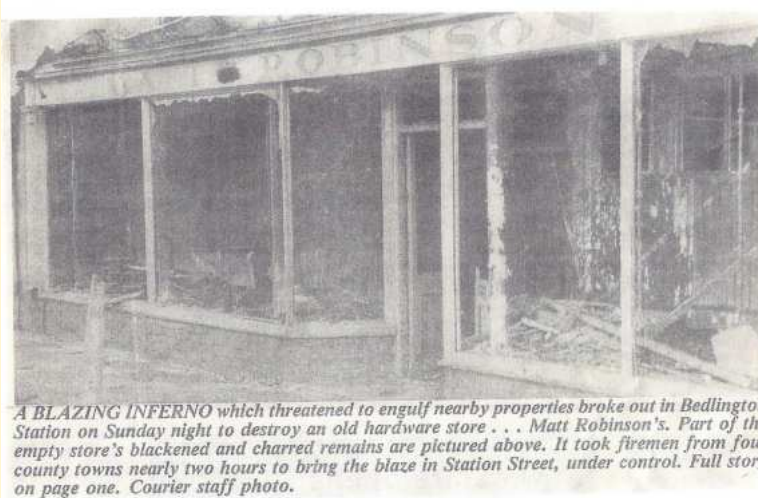
Work has now started on a £20,000 refurbishment of the gap site on Station Street.

The site which once was home to Matty Robinsons Store has been an eyesore for local residents for a number of years.

CCTV has already been installed in a bid to detect those responsible for fly tipping and anti-social behaviour in the locality.

The Parish Council has taken out a lease on the land from owners Sleekburn Estates and will create a 'pocket park' with seating and soft landscaping. A pathway will be installed to allow access from the large car park at the rear of the site to the shops on Station Street.

The work is being done at no burden to the council tax payer thanks to grant funding from ward councillors Valerie Tyler (Bedlington East) and Jeff Gobin (Sleekburn).



A BLAZING INFERNO which threatened to engulf nearby properties broke out in Bedlington Station on Sunday night to destroy an old hardware store . . . Matt Robinson's. Part of the empty store's blackened and charred remains are pictured above. It took firemen from four county towns nearly two hours to bring the blaze in Station Street, under control. Full story on page one. Courier staff photo.

The vandalised exterior fence has been replaced with wrought iron fencing complete with finials and access gates which will be kept locked during the hours of darkness and lots of interest has been generated now that the excavators have started clearance work.

Thanks to Mr Nichol of West View for providing a copy of the original article from the 5th November 1986 edition of the Courier, reporting on the demise of the former hardware store.

A layout plan is posted in the Parish windows for those interested in further details.

If you see it... report it!



The Parish Council has recently undertaken a full repaint of all seats, bus shelters and bollards in our Parish. If you notice graffiti let us know and we will arrange to have it removed.

Damage to bus shelters and public seats is sadly a regular occurrence in the Parish. Help us to stamp it out. If you see vandalism taking place contact the police using 101 or alternatively you can ring the Parish Office on 01670 828808 during office hours and report incidents in confidence.

**Thank you funders!**

The Trustees would like to thank the following funders for their support
Community Foundation (Barnes Fund),
RW Mann Fund, Sir James Knott, William
Leech Charity, Joicey Trust, Catherine
Cookson Charity, Barbour Trust, the
Rothley Trust & not forgetting East
Bedlington Parish Council

What's on

Exercise with Emma

Monday 6-7pm **Booty blast**

Wednesday 6-7pm **Boot camp**

Friday 6-7pm **Boxercise**

For more information please
contact Emma on 07983 309 933

Baby & Toddler Sessions

Monday 10am till 12 noon
£1.50 per child

For more information please
contact Claire on 825773

**People Painting for
Health & Leisure**

We meet every Wednesday
from 10am—3pm

Make new friends and enjoy a
new therapeutic hobby!

£2.50 per session including tea
or coffee

Mind Active Activity Days

Lunches and entertainment for
people with dementia and their
carers/ loved ones. Enjoy good
company in a relaxed and
supportive atmosphere. To find
out more or try out a session
contact Janet or Stephen on
01670 820461

Bedlington Flower Club

We are a small friendly group who
meet on the second Tuesday of the
month we are affiliated members of
NAFAS and welcome new members
of any ability. To find out more
please contact Gladys Smith on
01670 824 314

**The South East Northumberland
Stroke Support Group**

A volunteer led group set up to
help and support people living
with stroke and their carers. We
meet on the 3rd Monday of
every month from 1pm to 3pm.
For more information about the
group please call the secretary
within office hours on 01670
712834 or 07791 628 144

Wansbeck Matters

We meet every Monday
(except the 3rd Monday).
We are a friendly group
who are interested in
keeping alive the
traditional crafts of making
hooky and proggy mats.
For more information call
into a class!

Guidepost Art Group

We meet every Thursday
between 7pm and 9pm .
New members welcome -
just pop into one of our
sessions

1st Bedlington Rainbows

Girl Guiding for 5 to 7 years

Thursdays 4.15pm to
5.45pm

For details please email
fitterbug@live.co.uk or
phone Claire on 01670
825773





Plans to renovate East Bedlington Community Centre

In just twelve short months since its formation, East Bedlington Community Centre is now exceeding all expectations. Thanks to the hard work of the new trustees and grants and donations from local funders, including East Bedlington Parish Council.

The Community Centre has benefited from redecoration and the acquisition of essential equipment, which is available to use free of charge.

Now an efficiently run and viable concern the Community Centre Trustees have exciting plans to renovate the former Co-Operative building. The plans would see the doubling of the existing capacity of the ground floor and a 200 seat function room to the first floor which will include a mezzanine floor, along with a DDA compliant access lift.

The Community Centre's solicitors are now in the process of finalising a 30 year lease on the building and a business plan is in place.

Community Centre Chairman, Ron Straughan, advised the next step would be to approach large scale funders and he thanked the East Bedlington Parish Council for their pledge to match any contribution from Northumberland County Council.



Hearing aid support in Bedlington Station

Many people who use hearing aids find it difficult to get to a hospital for regular maintenance or help but now you can receive that at the East Bedlington Community Centre. For simple tasks such as

- ◇ Re-tubing for NHS hearing aids (every 6 months)
- ◇ Or information on cleaning
- ◇ Or collecting new batteries (or returning old ones)

You could come along to the drop in session held on the 1st Tuesday of every month, between 12noon and 1pm

The sessions are run by Action on Hearing Loss (previously RNID) and we work in partnership with the audiology department of the Freeman Hospital in Newcastle.

For further information please call 01670 513606 or email:

Heartohelp.northoftyne@hearingloss.org.uk

HIRE EAST BEDLINGTON COMMUNITY CENTRE from £10 PER HOUR

Situated on Station Street the recently refurbished Community Centre offers spacious facilities including a kitchen. Full disabled access. Parking in close proximity. Available for meetings, training sessions community activities, birthday parties, funeral teas, consultation events, table top sales, fund raising events, information and advice sessions.

“Run by the Community for the Community”



Small grants and donations



Plaque Of Honour finds fitting home

In 1992 the European Council presented Wansbeck District Council with the Europa Plaque of Honour. Four years later it was awarded the Europe Prize, the Council of Europe's highest town twinning honour, for its long standing partnership with the German towns on Remscheid and Shalksmuhle.

We believe that Wansbeck is the only District Council ever to have won this prestigious award. Previous winners include Vienna, Innsbruck and Bologna.

Council leader at the time, Denis Murphy said: "This is an absolutely tremendous honour for the people of Wansbeck and really puts the district on the map of Europe".

Exchange visits began between groups of young people from the towns in 1950.

The "Plaque" has been carefully stored by East Bedlington Parish Council since the dissolution of the District Councils in 2009 and has now been passed onto Northumberland County Council's Culture, Leisure and Tourism department to be publically displayed and to give County wide recognition of the achievement's of the warm hearted Wansbeck community.





Small Grants and donations have recently been made by the Parish Council. Councillor Colin Parker, Communication & Community Liaison Champion is pictured presenting Cheques to:

Chair of Governors Stead Lane Primary School

Sue Greaves

Burnside Estate Residents Group Chairman

Keith Scantlebury.

Chair of Governors Cambois Primary School

Kim Green

Bedlington Station Primary School

Headteacher Pauline Mulholland and pupils

Bedlington Community High School Breakfast Club

Joyce Logan and pupils

Bob and Helen call it a day



After more than quarter of a century providing local gardeners with plants of all description, Bob & Helen have decided it is time to call it a day.

Their business, which started selling tomatoes, has been their passion and grew and grew as the word spread about the quality of their plants and competitiveness of their prices. For many the trip to Bob & Helen's became an annual pilgrimage, not just a shopping event but a social experience that local gardeners looked forward to each year.

More recently, Bob & Helen have supplied the Parish Council with its spring and summer bedding plants and hanging baskets. The quality is there for all to see and the Parish Council would like to place on record its gratitude as well as wishing them a happy and well earned retirement.

Speaking recently Bob said that Helen and He would sadly miss the business which had become their way of life but aging years, health and family commitments had helped them arrive at their decision. Bob and Helen would like to thank all of their customers both old and new for their support over the years.

LICENSING ACT 2003
APPLICATION FOR A PREMISES LICENCE

Notice is hereby given that we
EAST BEDLINGTON COMMUNITY CENTRE

Have submitted an application for a Premises Licence in respect of
EAST BEDLINGTON COMMUNITY CENTRE
16 & 17 STATION STREET
BEDLINGTON
NE22 7JN

The proposed application is for:
PROVISION OF REGULATED ENTERTAINMENT; PROVISION OF
ENTERTAINMENT FACILITIES; MONDAY TO SATURDAY 08:00 TO 23:30,
SUNDAY 10:00 TO 22:00

PROVISION OF LATE NIGHT REFRESHMENTS MONDAY TO SATURDAY 06:00 TO
23:30, SUNDAY 10:00 TO 22:00

A record of the application may be inspected during normal office hours at the
offices of Northumberland County Council,

South East Area
Loansdean
Morpeth
NE61 2AP

Any objections to this application must be sent in writing stating grounds of
objection to:-

The Chief Executive, Northumberland County Council
South East Area
Loansdean
Morpeth
NE61 2AP

No later than 16 September 2013

Dated this 9th August 2013



YOUTH ACTIVITIES

Free Caged football sessions have been running throughout the summer holidays this is thanks to an initiative from the Neighbourhood Policing Team which has been supported by Bernicia and East Bedlington Parish Council. Why not pop along to the following venues

- 16 August Kings & Queens Road Estate 6pm—8pm
23 August Burnside Estate, Bedlington Station 6pm—8 pm
6 September Oval Estate, East Bedlington 6pm—8pm

Sessions are supervised by qualified coaches.



COUNTY YOUTH SERVICE

Youth workers from Northumberland County Council youth service visited Tarlungeni – a Roma village near Brasov in central Romania – with a group of eleven year 10 students from Bedlingtonshire Community High School to complete a project this month that they had been working on for almost a year.

They visited Brasov in central Romania and worked with the FAST charity to devise a plan that aims to improve the lives of the Roma people and challenge the world view and values of the young people from Northumberland.

FAST work with the poorest of Romanian families to improve the living standards of people who live in poverty; this is done by building them houses, supporting them to develop their village and in educating the children.

This is just one example of the type of things that the Youth Service does with young people aged 13-19.

The workers are out and about in Bedlington: detached workers on the streets, delivering sessions at Dr Pit Park or working in the School.

For more information catch Ian, Mike, Lee or Sarah when you see them or email Michael.kelcey@northumberland.gov.uk or ring 01670 511923





**'COME FOR
COFFEE'**
IT'S FOR MACMILLAN
27 September 2013



**WE ARE
MACMILLAN
CANCER SUPPORT**

Last year East Bedlington Community Centre in partnership with the Parish Council raised £158.51. Help use raise even more this year for this very worthwhile cause!

You can do this by

- ✓ donating a cake, scones or biscuits
- ✓ Donating a tombola prize
- ✓ Taking part in the sponsored keep fit session
- ✓ Helping out on the day

For more information contact Jenny Tindale on 01670 828808 or email JennyTindale@btconnect.com

Meet your Neighbourhood Beat Officer

There are lots of new faces in the Bedlington Policing Team why not have a cuppa with your local copper? It's a great opportunity to talk about your policing priorities and take advantage of free crime prevention advice and materials on the day!

NOT IN MY NEIGHBOURHOOD REVISITED

The "Not in my neighbourhood" initiative took place in 2009 across East Bedlington. The 'action week' was successful in bringing the residents and multi agency partners together to tackle a wide range of issues linked to crime, anti-social behaviour and environmental concerns.

East Bedlington Parish Council would like to revisit this working model to tackle a long term problem area between East Sleekburn East and East Sleekburn West.

The scheme will explore opportunities to improve the former connecting road between the two settlements, which may include cutting back overgrowth, sympathetic planting and provision for wildlife. The path is regularly used by children walking to school, dog walkers and visitors to the area. If you regularly use this route you will be familiar with the many issues we would like to help residents address.

The next step is to bring together all the interested parties and prepare an action plan. Do you use this pathway? Would you like to share your views and aspirations? Will you volunteer to help make a difference? If yes, please contact Jenny Tindale, Assistant Parish Clerk on 01670 828808 or email

jenny.tindale@btconnect.com for more information.





A FAMILY OF TEACHERS

By Carole Fife

Despite being the youngest child of an agricultural labourer, William Fisher, born in 1824 in Newcastle, managed to get an education and to train as a teacher, and in 1856 he was appointed as the first Master of Sleekburn School (now the Library).

Being Master of a school was not an easy job; for in addition to teaching a large class of children he had also to train the monitors and pupil teachers who were his assistants, and to supervise their classes while teaching his own. All this was in one large room, with low partitions so that he could see all that was going on. William needed to be a strict disciplinarian to keep the children quiet and everyone working, and he was never away from the school, for the school house was included as part of his salary. As the colliery increased production and the workforce grew, so the number of children in the school rose and the building had to be extended three times until it eventually accommodated over 600 children.

After the first few years William was joined by some qualified assistants, but the majority of his staff were still trainees. The 1870 Education Act brought in payment by results, so William then became responsible for constantly testing the children. The first official Report on the school, recorded in the Log Book in November 1873 states "The children passed an excellent examination, and this is more credible as the school is crowded. Assistant Teachers will be required in this school." Two of William's most valuable Assistants were his daughters

Margaret (born 1849) and Anne (born 1854), whom he had trained. When the new infant extension was opened in 1875 Margaret was put in charge, but only as Assistant to William. For the next fifteen years the Inspectors kept recommending Margaret as Head of a separate Infant School but, because William was paid according to the number of children in his school, that would have entailed him losing some of his salary to his daughter! When the new Village Infants opened it was Annie (a Junior teacher) who went there as Headmistress in 1881. Margaret was much better qualified for the position, but then William would have needed to train someone else to whom he could safely delegate all the work of overseeing the infants. For several years every child in Bedlington was taught by one Miss Fisher or the other..

William died in service in May 1885, aged 60, for in those days you worked until you died. But his death brought one benefit for his daughters – they had to leave the school house. Even though they were both earning a good wage for a woman, they had been expected to live with their parents because they were single. Now Margaret and Annie, and their mother Elizabeth were able to live in Hirst Terrace.

Margaret's life was no easier under the next two Headmasters than it had been under her father, because as an experienced teacher she was the first to be given extra work when things got difficult as the school grew. When the third extension, the purpose built

infants school, was opened in 1897 and Margaret still didn't get the Headship, that seems to have broken her spirit and she had frequent illnesses, until in March 1906 she was allowed to leave with a breakdown pension, something that had only recently been introduced.. The unkindest cut of all came a year later when the Managers made the Infant Department into a separate school and appointed someone half Margaret's age as Headmistress.

The first Log Book for the school runs from 1873 until 1907, and the last entry reads "Dec 19th 1907 Miss Fisher, late mistress of the Infant Dept died yesterday and will be buried on the 20th. The teachers and children are presenting a wreath". Margaret was 57 when she died - but at least she had a little retirement.

Annie continued teaching at Bedlington Village Infants until 1917 when, after 3 weeks illness, the Log Book records "March 27th 1917 Miss Fisher died today"

Annie, aged 63, died in service like her father. A plaque in her memory was erected in the Infants school, which later became St Cuthbert's Church Hall. When the building was closed the plaque was moved into the church

William and his wife Elizabeth are buried in St Cuthbert's churchyard, but their gravestone also commemorates Margaret and Annie who are buried in Bedlington Cemetery.





Your Councillors



Chair: Cllr Alex Wallace ☎ 01670 822858
Email: Alexwallace@hotmail.com



Vice Chair—Cllr Allan Stewart ☎ 01670 826025
Email: A. Stewartnum@tiscali.co.uk



Cllr Colin Parker ☎ 01670 825330



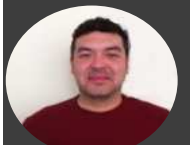
Cllr Nichola Hogarth ☎ 07709 316617
Email: nicholahogarth1@fsmail.net



Cllr Paul Hedley ☎ 01670 530566



Cllr David Graham ☎ 01670 828907
Email: david.graham54@yahoo.co.uk



Cllr Terry Johnstone ☎ 07891 698040
Email: terryjohnstone7@gmail.com



Cllr Jay Davis ☎ 01670 531973
Email: jaydavis65@hotmail.com



Cllr Dave Armstrong ☎ 01670 828153
Email: D.armstrong153@btinternet.com



Cllr Joe Dobie ☎ 01670 824113



Cllr Andrea Innes ☎ 01670 823149
andrainnes34@hotmail.com

Working Groups

Planning Champion

Environment Champion, Finance & General Purposes

Communication & Community Liaison Champion

Finance & General Purposes Champion

Environment and Communications & Community Liaison

Environment, Planning, Finance & General Purposes and Communication & Community Liaison

Communication & Community Liaison

Planning and Environment



Your Parish Team

Ron Thornton

Parish Clerk & Responsible
Financial Officer
clerk@eastbedlingtonpc.org.uk

Mobile 0752 842 8609



Jenny Tindale

Assistant Parish Clerk

jennytindale@btconnect.com

Mobile 07900 683 675



Parish Office

East Bedlington Parish Council

Parish Office

16 & 17 Station Street

Bedlington

NE22 7JN

☎ 01670 828808

www.eastbedlingtonpc.org.uk

Normal opening hours

Monday to Friday

10am to 12 noon

2pm to 4pm

Your Northumberland County Councillors



Councillor Valerie Tyler
Bedlington East Ward
01670 825252



Councillor Jeff Gobin
Sleekburn Ward
01670 822539

About East Bedlington

The Parish serves the communities of North Blyth, Cambois, East Sleekburn, Bedlington Station and East Bedlington. The Parish consists of two wards, Sleekburn and Bedlington East and has some of the highest levels of economic and health related deprivation statistics in the UK.

The Parish is represented by 11 Councillors whose details can be found on page 15 of this publication and the Parish website

Meetings

The Parish Council meets on the 1st Tuesday of each month at 6.00 pm (with the exception of August) at its office on Station Street.

The first 15 minutes of each meeting is allocated to members of the public who can raise issues and comment on the business to be conducted