

# East Bedlington Parish Council

ISSUE 6 Winter 2013



## Allotment Queen Jean takes First Prize!

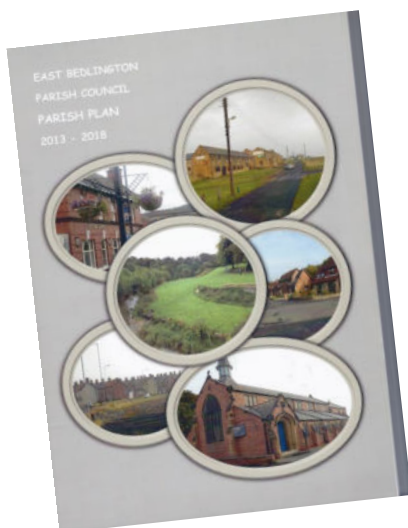


Keen gardener Jean Docherty took first prize in the Best Allotment section of East Bedlington Parish Council's garden competition. The judging which took place in July attracted some amazing entries ... see page 4 for our other winners.

Jean, who along with her family took over the plot in October 2010 and through their hard work and determination have created an amazing productive plot.

The competition at the Cambois Allotments was really strong and the site seems to have undergone a renaissance as the effects of strict tenancy management and capital investment by the East Bedlington Parish Council take shape. The latest improvement is the fitting of a CCTV camera to St Andrews Church which will deter fly tippers and ensure any uninvited visitors to the site can be identified and prosecuted.

## Parish Plan paves the way forward for the parish council and its partners



The East Bedlington Parish Plan is now completed and has been endorsed by Councillors at their meeting in November. A limited number of hard copies are available from the parish office or you can view the plan on our website [www.eastbedlingtonpc.org.uk](http://www.eastbedlingtonpc.org.uk)

### Inside this issue

County Youth Service	2
Environmental update	3
Garden competition 2013	4
Christmas Day Volunteer Event	5

Almost 9000 people will get their Community Centre! 6

Christmas Switch on	9
What's on	10
Co-operative competition	12
Faith news	14
Councillors details	15
Parish council office	16
County councillor details	16

**Fill in and return the enclosed questionnaire for your chance to win £150**



## Meet the Northumberland Youth Service Team

Northumberland Youth Service would like to introduce their team of workers, Sarah, Lee, Hayley, Billy, Ian, Roni and Mike, as the faces you may see in and around Bedlington, delivering opportunities for young people.

If you're thirteen to nineteen years of age, then come along to the youth club at Dr Pit Park, every Wednesday from 6-7.30pm. At the youth club you'll meet experienced, DBS checked and trained youth workers, dedicated to providing opportunities for young people. This includes the latest work, training and apprentice opportunities, funding opportunities, exciting and rewarding challenges, as well as a place you can catch up with your friends, play a game of pool or ping pong and receive advice and guidance.

*"We are always open to new ideas as we know the best ideas are the ideas that the young people come up with themselves yet often struggle to find ways to make them happen"*

Youth clubs are based around young people and their ideas! We are the ones that do our best to help you (when realistic) see it happen!

You can also find Sarah and Lee around Bedlington High School delivering informal education and school drop in's, ready to hear the thoughts of young people! Failing that, you can also catch some of the team out every Friday in and around Bedlington on detached, ready to hear your thoughts and ideas!

Remember that even when it doesn't seem like it, there are always opportunities around! Some of the latest opportunities on offer are enterprise activities, including residential stays, youth cabinet, £100 challenges and much more!

Come and find the youth workers for more information! Or Contact Mike Kelcey on 01670 620320 or email [Michael.kelcey@northumberland.gov.uk](mailto:Michael.kelcey@northumberland.gov.uk) for details on our youth offer and opportunities for volunteers





## Environmental update across the parish

### Play equipment is refurbished

The parish council took over the maintenance of several playgrounds in April this year. Unfortunately many of the facilities are nearing the end of their recommended lifespan. The parish council intends to fully consult with communities regarding the existing play equipment as part of the Parish Plan process



identified that there was a potential to consolidate some of the more remote sites and create a larger, better equipped play facility. In the short term each play area has had a coat of paint, dog grids where accessible have been

clean out and additional grass cuts have been arranged to take account of the exceptionally mild weather we have experienced this autumn.

If you have a comment or suggestion to make about the existing play parks please get in touch either by email, in writing to the parish office or via the contact us option on our website. We want to hear your views!



### Gap site

Work is progressing to turn the gap site on Station Street into a pocket park, albeit at a lot slower rate than we had hoped! The basic layout, pathways and street furniture are now in place and the site is securely fenced. CCTV has been installed which covers the newly created park, the car park to the rear of Station Street and an additional camera is covering Station Street up to the Clayton corner. The work to date, although unfinished marks a huge improvement in the appearance of the main

shopping area in Bedlington Station.



Summer 2013



Winter 2013



## East Bedlington Parish Council Garden Competition 2013



Raymond Chaytor winner Best Large Garden pictured with Councillors Alex Wallace and Allan Stewart



George Atkinson Highly Commended in the Best Large Garden section



Above David Holland receives his trophy as winner of the Best Hanging Basket / Container / Window box section



Pictured below is Jeff Sprat receiving his Highly Commended certificate in the Best Hanging Basket / Container / Window box section



Entering the competition for the first time won first prize in the Best Small Garden category

With a growing number of entries the competition was certainly very strong this year. In addition to those deserved winners pictured on page 4 the Best Back Yard trophy was won by Sylvia McLeod and the Best Allotment by Jean Docherty. A special award was also made to Almaz Hutchinson for the most improved garden.

All the entrants were invited to a presentation evening at East Bedlington Community Centre our thanks and congratulations go to all who took part.



Do you know an older retired person who will be spending Christmas alone?



### Volunteer Festive Cheer Christmas Day Event



Mind Active in partnership with East Bedlington Parish Council and East Bedlington Community Centre will be holding a free Christmas Day Tea on Wednesday 25 December to enable retired older people living on their own and/or couples that have not had any visitors on Christmas Day, to spend some time among others and enjoy a light tea of sandwiches, mince pie and tea/coffee whilst listening to our guest organist.

The activity will take place from **4pm to 5:30pm** at East Bedlington Community Centre and will be hosted by Mind Active volunteers.



For more information please contact Mind Active on 01670 820461  
Or East Bedlington Parish Council on 01670 828808.





## Almost 9000 residents will get the Community Centre they deserve!

### Parish Council pledges £350,000 to ensure that East Bedlington residents get the Community Centre that they deserve.

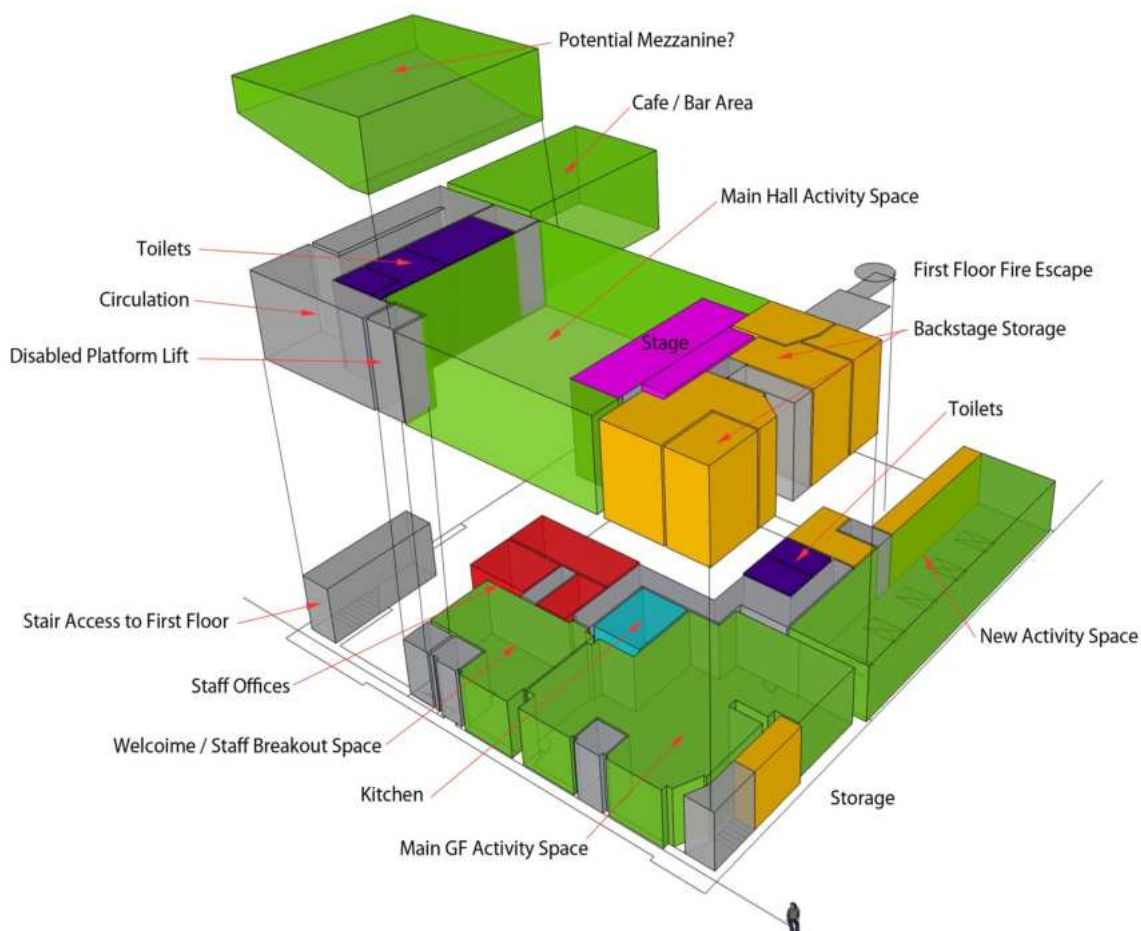
In the summer addition of this newsletter the parish council pledged to match any financial contribution made by Northumberland County Council towards the restoration of East Bedlington Community Centre.

A business plan was submitted to NCC by the Community Centre trustees over 12 months ago and their response is still eagerly awaited. However the Parish Council felt that it needed to take action to support the needs of local people.

The Council therefore intends to borrow £350,000 over a period of 15 years to contribute to the overall refurbishment costs estimated at £750,000. This will result in an increase to the annual precept of £30,000 which equates to a 0.20p per week increase for most properties (Band A) and slightly more for those living in higher banded properties.

Detailed plans have now been drawn up and we expect the first phase to be complete by October 2014.

## How the Centre will look





Hugh Massey Architects have produced a 3D drawing of how the new community centre will look when fully restored.

The trustees have reported that Phase 1 will involve developing a new activity space to the rear of the main hall on the lower floor and remodelling the existing kitchen space to create access from all areas of the lower floor. They also advise that user groups have told them how important on site storage is so they have ensured that this has been built into the design.

Other Phase 1 works will include securing the roof and making the building watertight; carrying out professional treatments to the upper floor of the building; replacing the windows and pointing the brick work; building in energy efficient systems to ensure that the building is sustainable and makes the most of modern technology to capture and recycle heat.

Work is set to start on renovating the building in Spring 2014 subject to planning approval and it is anticipated that the first phase will be completed by October 2014.

Simultaneously the trustees will continue to seek funding for phase 2 which will see the renovation of the upper floor. This scheme will return the jewel to the crown creating an amazing space unlike any other in the area. A street level lift will be installed to enable access to the upper floors and the Café/Bar area.

The upper floor design will retain the stage and open up the gallery area to create a mezzanine floor, giving the upper floor a letting capacity of in excess of 200 people.

Once the trustees have secured funding for phase 2 they hope to create the equivalent of 4 full time jobs.

East Bedlington  
Community Centre  
Multi-purpose space  
*former Co-Operative Hall*



Hugh Massey Architects



## **Northumberland County Council Snow Clearance Advice**

Parish Councillors are often approached with regards to snow clearance. Northumberland County Council who carry out this function have produced a leaflet which is available from the parish office entitled 'Highway Services in Winter. We are happy to share some of the advice provided by NCC

### **Snow Clearance**

During and after major snow storms our aim is to maintain or restore road communications as soon as possible. Where necessary we will move resources to areas of greatest need. However it is not practical to clear all roads in the first instance and our clearance priorities will be:

- Principle Roads—cleared to a minimum of two lane width
- Roads into towns and villages—at least one road into each settlement to allow access to the cleared major road network.
- Major town centres
- Emergency service locations
- Approaches to schools
- Main council owned car parks
- Other roads

Snow clearance on the lower priority roads will only take place when the higher priority roads will have been cleared, which may take several days after the initial or reoccurring snow storms. place. When you park your vehicle, consider whether a gritter fitted with a snow plough would have room to pass, especially at evenings and weekends when local roads are full of parked cars. Remember that an ambulance or fire engine might need access too.

### **Grit bins and self help**

Everyone can do their bit to help, particularly in snow conditions. Clearing footways around your own home and helping elderly or infirm neighbours will ensure that footways and local roads are safer and easier to use. The County Council provides over 1500 grit bins across the county at locations with steep gradients, exposed sites, steps or difficult junctions. The grit in these bins is provided to allow residents to treat roads and footpaths themselves during severe weather—it is not provided for use on private roads or driveways.

All of our grit bins are filled at the start of winter and replenished as necessary. Each grit bin has a sticker showing its' unique reference number which helps us locate the grit bin. In rural areas grit heaps may be placed on the highway verges on steep hills to assist road users.

If you need to contact us to request a new grit bin, to have a grit bin filled, or to report damage or misuse of a grit bin please report via :

Website [www.northumberland.gov.uk](http://www.northumberland.gov.uk)

Telephone us 24 hours a day 7 days a week on 0845 600 6400

Email: [ask@northumberland.gov.uk](mailto:ask@northumberland.gov.uk)

Call in or write to: County Hall, Morpeth NE61 2EF

**Highways Services in Winter leaflets offering full advice are available from the parish office**





## Christmas Lights switch on 2013



Bethany O'Brien and Cameron Bowman switch on our Christmas lights



Thank you to everyone who turned out to our switch on event I am sure you will agree our young people are very talented!



Rev'd Ian Hennebry played a major role in ensuring the carol singing ran smoothly .



Joint choirs from Stead Lane & Bedlington Station Primary Schools



Bedlington High School Steel Pan Band played a selection of seasonal tunes



Children from Bedlington Station Primary School prepared their own song



### County Church Wansbeck

Meet at East Bedlington Community Centre every Sunday morning

10:30 for tea & coffee

11:00 meeting starts

12:30 finish

For more information please visit our website [www.countychurch.co.uk](http://www.countychurch.co.uk)

## What's on

### WOW! Fitness

**Monday**      **Booty blast**  
**Wednesday**      **Metfit**  
**Friday**      **Box 'n' Abs**

All sessions are 6pm to 7pm.

For more information please contact Emma on 07803 730 339

### Baby & Toddler Sessions

Monday 10am till 12 noon  
£1.50 per child

For more information please contact Claire on 825773

### People Painting for Health & Leisure

We meet every Wednesday from 10am—3pm

Make new friends and enjoy a new therapeutic hobby!

£2.50 per session including tea or coffee

### Mind Active Activity Days

Lunches and entertainment for people with dementia and their carers/ loved ones. Enjoy good company in a relaxed and supportive atmosphere. To find out more or try out a session contact Janet or Stephen on 01670 820461

### Bedlington Flower Club

We are a small friendly group who meet on the second Tuesday of the month we are affiliated members of NAFAS and welcome new members of any ability. To find out more please contact Gladys Smith on 01670 824 314

### The South East Northumberland Stroke Support Group

A volunteer led group set up to help and support people living with stroke and their carers. We meet on the 3rd Monday of every month from 1pm to 3pm. For more information about the group please call the secretary within office hours on 01670 712834 or 07791 628 144

### Wansbeck Matters

We meet every Monday (except the 3rd Monday). We are a friendly group who are interested in keeping alive the traditional crafts of making hooky and proggy mats. For more information call into a class!

### Guidepost Art Group

We meet every Thursday between 7pm and 9pm . New members welcome - just pop into one of our sessions

### 1st Bedlington Rainbows

Girl Guiding for 5 to 7 years

Sessions are 4.15pm to 5.45pm

For details please email [fitterbug@live.co.uk](mailto:fitterbug@live.co.uk) or phone Claire on 01670 825773





## Tell us what you want—what your really, really want!

We want to be sure that the services and activities currently taking place in the community centre meet your needs. We have information from the parish plan which identifies gaps in provision. To help us plan ahead we need you to fill in the questionnaire enclosed in this newsletter and return it by 15 January 2014 for your chance to win £150, £75, or £50 in our cash draw.

We have allowed for up to 6 family members living in your household to be able to comment.

The completed questionnaires should be returned to East Bedlington Community Centre, 16 Station Street, Bedlington NE22 7JN

Please make sure you fill in your contact details so you can be entered into the draw.

We won't share any personal contact information with any other party.

Winners will be notified by 31 January and details posted in the Community Centre

### **HIRE EAST BEDLINGTON COMMUNITY CENTRE from £10 PER HOUR**

Situated on Station Street the recently refurbished Community Centre offers spacious facilities including a kitchen. Full disabled access. Parking in close proximity. Available for meetings, training sessions community activities, birthday parties, funeral teas, consultation events, table top sales, fund raising events, information and advice sessions.

**“Run by the Community for the Community”**



## Hearing aid support in Bedlington Station

Many people who use hearing aids find it difficult to get to a hospital for regular maintenance or help but now you can receive that at the East Bedlington Community Centre. For simple tasks such as

- ◇ Re-tubing for NHS hearing aids (every 6 months)
- ◇ Or information on cleaning
- ◇ Or collecting new batteries (or returning old ones)

You could come along to the drop in session held on the 1st Tuesday of every month, between 12noon and 1pm

The sessions are run by Action on Hearing Loss (previously RNID) and we work in partnership with the audiology department of the Freeman Hospital in Newcastle.

For further information please call 01670 513606 or email:

[Heartohelp.northoftyne@hearingloss.org.uk](mailto:Heartohelp.northoftyne@hearingloss.org.uk)



## CO-OPERATIVE COMPETITION

By Carol Fife

Bedlington Equitable Industrial Co-operative Society Limited was founded on 29<sup>th</sup> April 1861, with its business based in Front Street. The Cramlington Society was founded in the same year, but despite the greater distance it was this Society which opened the first branch of the Co-op in Sleekburn in September 1867 to cater for the miners who moved here when the Cramlington pits closed.

Despite opposition from other businesses, the Cramlington Society leased a building in the village and opened a grocery and general dealer's business. In their first year they made sales of £120, and after the opening of a butchery department sales rose to £29 per week. When the butchery department needed to expand it moved to larger premises across the road, and shoemaking, drapery and tailoring departments took over the old premises. In 1872 sales had risen to £97 per week.

Then disaster struck; fire broke out and nearly all of the grocery and drapery departments were destroyed. With the insurance payment of £1,592 the premises were rebuilt, but then the whole Co-operative movement in the north of England went through bad times with the failure of the Industrial Bank in the late 1870's, and as membership of the Society declined so did trade.

When trade began to pick up again the Committee of the Sleekburn Branch took the brave decision to build new premises on land near the station. Attempts were made by some members to merge with the Bedlington Society, but the committee stuck to their plans and the building was constructed at a cost of £4,070. There were some cost-cutting alterations, such as a planned wheel window over the main entrance being replaced by the three small windows, but the new Co-op was a grand building. Downstairs were the butchery, grocery and provisions, and drapery departments, together with the stables and harness rooms, while

upstairs was a large hall, with a gallery at the opposite end to the stage - and the gallery had seats, not just benches!

Although building work was delayed by bad weather, the building was opened on 1<sup>st</sup> May 1886 by Lady Grey of Berwick, with a public tea in the afternoon and a concert at night. Trade flourished, and the Committee soon realised that they should have bought more land to allow for expansion, as by 1911 sales were £18,000 per year..

The Co-operative Society, with its 'divi' paid to members was an asset to the area, but at times the Store hall was an even greater boon. It was the only building in Sleekburn able to hold a large number of people so it was used for concerts, exhibitions, flowers shows, magic lantern shows, and even dances. When John Smith became Head of the Colliery School in 1904 he began to hold school performances in the Store Hall, and they sold out on every occasion. When the Bedlington Station School opened in 1912 it was so overcrowded that its hall



was used for classrooms, so Mr Bullerwell held his annual prize-givings in the Store hall.. School events continued here until after the opening of the Palace Cinema which could hold a larger audience. The Store Hall was probably where the Bedlington Station Symphony Orchestra gave their one and only performance (see them on the Northumberland Communities website). It was certainly the home of the Sleekburn Co-operative Choral Society who in 1930 gave their second Annual Concert in what was then referred to as the Cramlington Co-operative Hall

The Bedlington Society had started a branch in Sleekburn in 1875, but the premises were too small to be useful, and it wasn't until 1880 that the Committee bought 'Mr Buckham's property at Bedlington Station' (the site of the present Co-op) They tried to take in Cramlington's branch in 1884 "believing that the existence of two Co-operative Societies' shops is opposed to the principles of Co-operation", and again in 1889, but to no avail, and it wasn't until

1905 that they built their own store on the lines of the Cramlington Society's branch, with a hall over the shops. This hall, named the Reay Hall after the Society's Treasurer, was used from 1920 until the opening of the Practical Instruction Centre in 1930 as a Domestic Science Centre to which senior girls from all the elementary school in the area would go for one day a week. The Bedlington Station County School's log book records that during the General Strike in 1926 children were sent to the Cookery Centre for breakfasts and

dinners.

The Cramlington Society's branch closed in the late 1950s, being then used downstairs by Brough's Grocery and upstairs by the Employment Office before it was taken over by Keenleysides in 1972. With the closure of the Cramlington Hall the Reay Hall came into its own as the social centre for Bedlington Station in the 1960s, although it has now been a gym for many years..

We hope that the Cramlington Store Hall will have a new lease of life in the near future..

**SLEEKBURN**  
(Branch of Cramlington Co-operative Society.)  
**: Co-operative Choral Society. :**

---

-: Programme :-  
OF THE  
**2nd. Annual Concert**

---

To be given in the—  
Cramlington Co-operative Hall,  
Bedlington Station,  
**ON TUESDAY, APRIL 15th, 1930,**  
AT 7-15 P.M.

---

**EDWARD GERMAN'S LIGHT OPERA**  
**"TOM JONES"**  
(By permission of Messrs Chappell & Co., Ltd. London.)

---

**ARTISTS :**

Soprano.	Miss CORINNA STIMPSON,	Ashington.
Mezzo Soprano.	Mrs. W. J. ALLAN,	Ashington.
Baritone.	Mr. HARRY HABBERJAM,	Ashington.
Bass.	Mr. JOHN TILLEY,	Lynemouth.
Accompanist	-	Miss Ada SWANN.
Conductor	-	Mr. William H. BATEY.
Chairman	-	Mr. J. BRUCE, Cramlington.
Hon. Seety.—Mr. J HOSKIN, 13, Albert Rd, Bedlington Colliery.		

---

J. Barker, Printer, Bedlington Station.



## Church Services in the Parish

**St John's Church  
North View  
Bedlington Station**

**Sunday 22nd December**  
Service 9am

**Tuesday 24th December**  
Christmas Eve  
6pm  
Church Family friendly  
Christingle carol service

**Wednesday 25th December**  
9am  
Christmas Day Service

**Sunday 29th December**  
9am  
Holy Communion Service  
9am

**Sunday 5th January 2014**  
10am  
Joint service with St Andrew's Cambois



**St Andrew's Church  
Cambois**

**Sunday 22nd December**  
Service 10.30am

**Sunday 29th December**  
Service 10.30am

**Wednesday 8th January**  
Service 10.15am

**Sunday 12th January**  
Service 10.30am



East Bedlington Parish Councillors and officers would like to wish you all a very merry Christmas and our best wishes for 2014.

The Parish office will be closed from Friday 20 December until Thursday 2nd January



## Your Councillors



Chair: Cllr Alex Wallace ☎ 01670 822858  
Email: Alexwallace@hotmail.com



Vice Chair—Cllr Allan Stewart ☎ 01670 826025  
Email: A. Stewartnum@tiscali.co.uk



Cllr Colin Parker ☎ 01670 825330



Cllr Nichola Hogarth ☎ 07709 316617  
Email: nicholahogarth1@fsmail.net



Cllr Paul Hedley ☎ 01670 530566



Cllr David Graham ☎ 01670 828907  
Email: david.graham54@yahoo.co.uk



Cllr Terry Johnstone ☎ 07891 698040  
Email: terryjohnstone7@gmail.com



Cllr Jay Davis ☎ 01670 531973  
Email: jaydavis65@hotmail.com



Cllr Dave Armstrong ☎ 01670 828153  
Email: D.armstrong153@btinternet.com



Cllr Joe Dobie ☎ 01670 824113



Cllr Andrea Innes ☎ 01670 823149  
andrainnes34@hotmail.com

## Working Groups

Planning Champion

Environment Champion, Finance & General Purposes

Communication & Community Liaison Champion

Finance & General Purposes Champion

Environment and Communications & Community Liaison

Environment, Planning, Finance & General Purposes and Communication & Community Liaison

Communication & Community Liaison

Planning and Environment



### Your Parish Team

Ron Thornton

Parish Clerk & Responsible  
Financial Officer  
clerk@eastbedlingtonpc.org.uk

Mobile 0752 842 8609



Jenny Tindale

Assistant Parish Clerk

jennytindale@btconnect.com

Mobile 07900 683 675



### Parish Office

East Bedlington Parish Council

Parish Office

16 Station Street

Bedlington

NE22 7JN

☎ 01670 828808

[www.eastbedlingtonpc.org.uk](http://www.eastbedlingtonpc.org.uk)

Normal opening hours

Monday to Thursday

10am to 12 noon

2pm to 4pm

### Your Northumberland County Councillors



Councillor Valerie Tyler  
Bedlington East Ward  
01670 825252



Councillor Jeff Gobin  
Sleekburn Ward  
01670 822539

### About East Bedlington

The Parish serves the communities of North Blyth, Cambois, East Sleekburn, Bedlington Station and East Bedlington. The Parish consists of two wards, Sleekburn and Bedlington East and has some of the highest levels of economic and health related deprivation statistics in the UK.

The Parish is represented by 11 Councillors whose details can be found on page 15 of this publication and the Parish website

### Meetings

The Parish Council meets on the 1st Tuesday of each month at 6.00 pm (with the exception of August) at its office on Station Street.

The first 15 minutes of each meeting is allocated to members of the public who can raise issues and comment on the business to be conducted